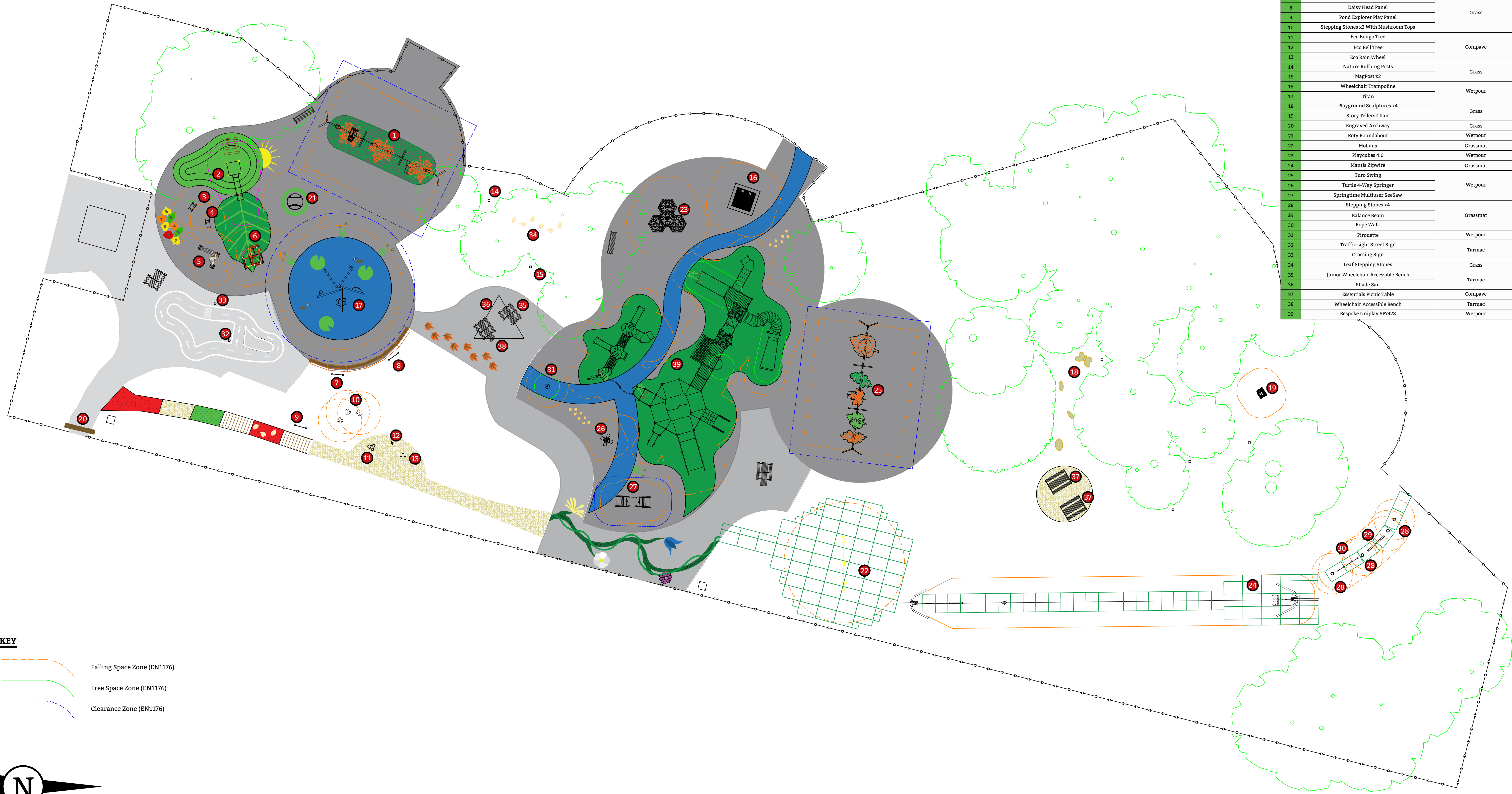
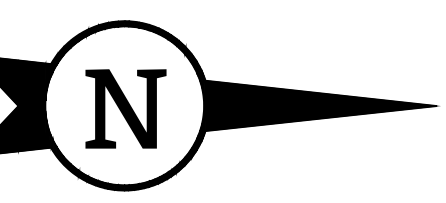


Key	Description	Surfacing
1	Turo Swing 2x Cradle 2x Flat 1x Tango 6 1x Mirage	
2	Swift Mound Slide	
3	Anky Springer	Wetpour
4	Prinsy Springer	
5	Play Town Restaurant	
6	Unimini Idole	
7	Minibeast Sensory Panel	
8	Daisy Head Panel	Grass
9	Pond Explorer Play Panel	
10	Stepping Stones x3 With Mushroom Tops	
11	Eco Bongo Tree	Conipave
12	Eco Bell Tree	
13	Eco Rain Wheel	
14	Nature Rubbing Posts	Grass
15	MagPost x2	
16	Wheelchair Trampoline	Wetpour
17	Titan	
18	Playground Sculptures x4	Grass
19	Story Tellers Chair	
20	Engraved Archway	Grass
21	Roty Roundabout	Wetpour
22	Mobilus	Grassmat
23	Playcubes 4.0	Wetpour
24	Mantis Zipwire	Grassmat
25	Turo Swing	
26	Turtle 4-Way Springer	Wetpour
27	Springtime Multiuser SeeSaw	
28	Stepping Stones x4	
29	Balance Beam	Grassmat
30	Rope Walk	
31	Pirouette	Wetpour
32	Traffic Light Street Sign	Tarmac
33	Crossing Sign	
34	Leaf Stepping Stones	Grass
35	Junior Wheelchair Accessible Bench	Tarmac
36	Shade Sail	Tarmac
37	Essentials Picnic Table	Conipave
38	Wheelchair Accessible Bench	Tarmac
39	Bespoke Uniplay SP7478	Wetpour



KEY

	Falling Space Zone (EN1176)
	Free Space Zone (EN1176)
	Clearance Zone (EN1176)



GENERAL NOTES

If not indicated on this plan, north point must be confirmed prior to installation to ensure that slides do not face due south.

No allowance has been made for soft landscaping (trees, mounds, planting, turf or general reinstatement). These should be carried out by others.

Exact positions & orientation of new items may be subject to a final site survey and setting out plan.

Any inconsistencies on site should be verified with HAGS before commencement of work.

HAGS recommend that existing trees are risk-assessed by the client to ensure the integrity of accessible branches, that overhanging limbs do not conflict with new play equipment or vehicle access and that the canopy will not produce excessive leaf drop which could cause a hazard within the play area.

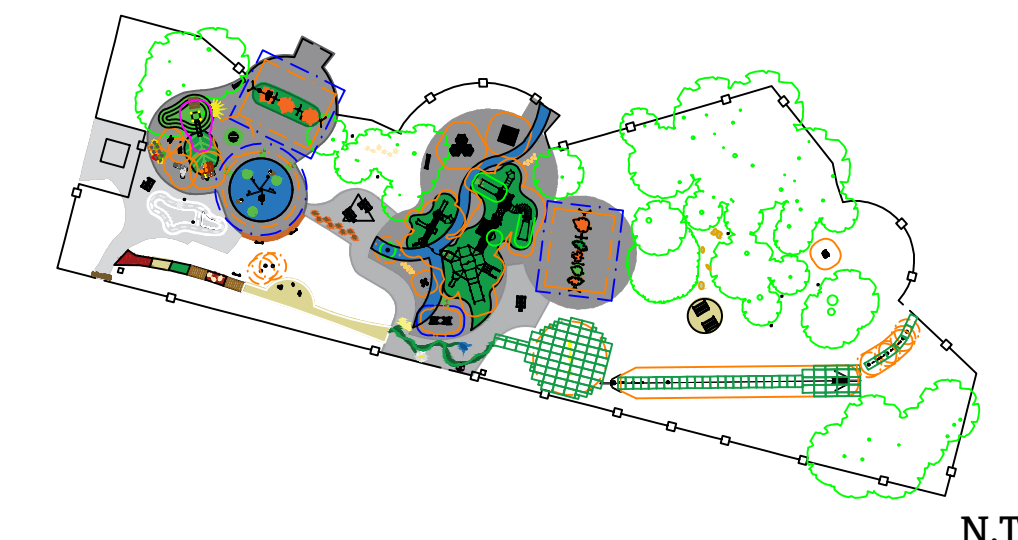
This design layout conforms to the relevant EN Safety Standard.

GRASS & GRASS MAT SURFACING

Where equipment is installed directly into grass and the free height of fall is between 0.6m and 1.5m it is the responsibility of the playground operator to ensure that the grass sward is maintained in good order.

Where equipment is installed with grass mat surfacing it is the responsibility of the playground operator to ensure that the grass sward is maintained in good order.

When laid directly onto existing grass this surface will follow the natural contours of the ground unless HAGS have specifically detailed additional preparation/levelling/or turf works.



N.T.S.

CUSTOMER
LB Richmond & Wandsworth

PROJECT
Tooting Common Lakeside option B

TITLE
Play Area Proposal

HAGS[®]
T: 0845 260 1655 E: sales@hags.co.uk W: www.hags.co.uk

DATE: 18/09/24 SCALE: 1:50 @ A1
DRAWN BY: L.L. CHECKED BY:

DRAWING NUMBER | Q-32914-D3Y7-C REVISION 1

© HAGS 2024 SHEET 1 OF 1

