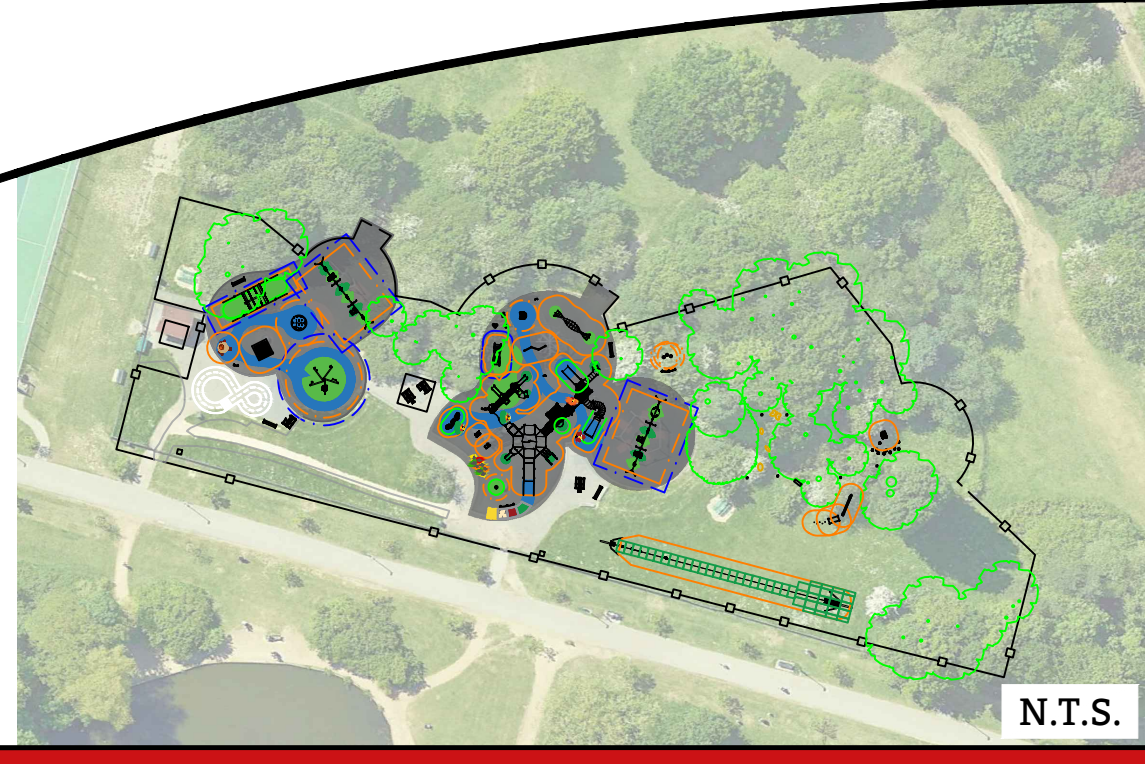
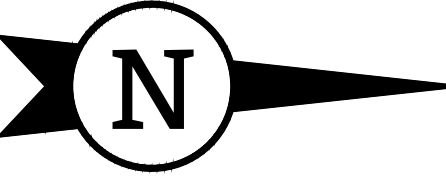
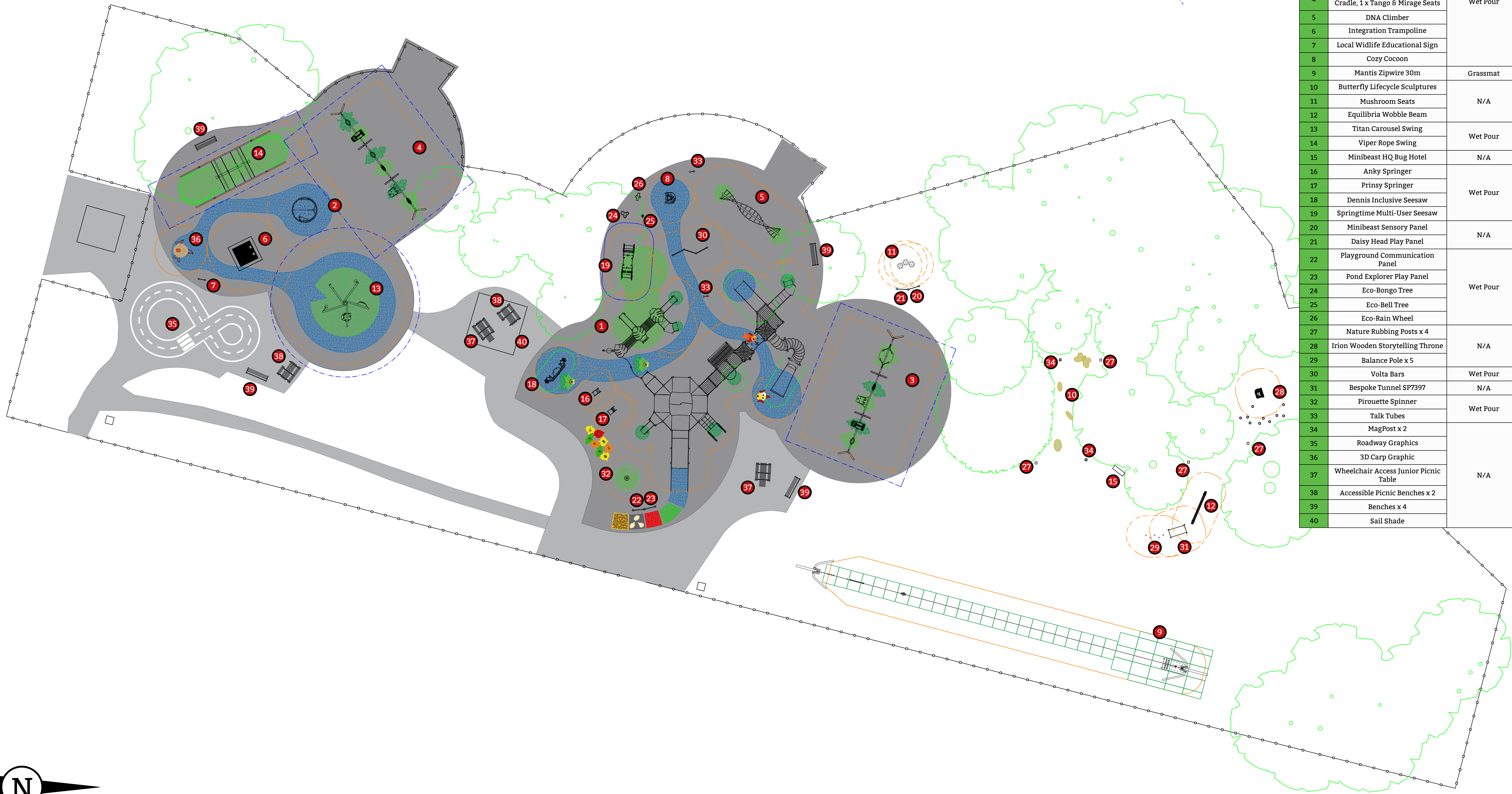


KEY

-  Falling Space Zone (EN1176)
-  Free Space Zone (EN1176)
-  Clearance Zone (EN1176)

Key	Description	Surfacing
1	Bespoke UniMix SP7395	Wet Pour
2	Spinnee Roundabout	
3	Turo Swing with Flat, Cradle, Tango, Mirage & Bravo Seats	
4	Turo Swing with 2 x Flats, 2 x Cradle, 1 x Tango & Mirage Seats	
5	DNA Climber	
6	Integration Trampoline	
7	Local Wildlife Educational Sign	
8	Cozy Cocoon	Grassmat
9	Mantis Zipwire 30m	
10	Butterfly Lifecycle Sculptures	N/A
11	Mushroom Seats	
12	Equilibria Wobble Beam	Wet Pour
13	Titan Carousel Swing	
14	Viper Rope Swing	N/A
15	Minibeast HQ Bug Hotel	
16	Anky Springer	Wet Pour
17	Prinsy Springer	
18	Dennis Inclusive Seesaw	
19	Springtime Multi-User Seesaw	N/A
20	Minibeast Sensory Panel	
21	Daisy Head Play Panel	Wet Pour
22	Playground Communication Panel	
23	Pond Explorer Play Panel	
24	Eco-Bongo Tree	N/A
25	Eco-Bell Tree	
26	Eco-Rain Wheel	Wet Pour
27	Nature Rubbing Posts x 4	
28	Irion Wooden Storytelling Throne	N/A
29	Balance Pole x 5	
30	Volta Bars	Wet Pour
31	Bespoke Tunnel SP7397	
32	Pirouette Spinner	Wet Pour
33	Talk Tubes	
34	MagPost x 2	N/A
35	Roadway Graphics	
36	3D Carp Graphic	
37	Wheelchair Access Junior Picnic Table	
38	Accessible Picnic Benches x 2	N/A
39	Benches x 4	
40	Sail Shade	



N.T.S.

GENERAL NOTES

If not indicated on this plan, north point must be confirmed prior to installation to ensure that slides do not face due south.

No allowance has been made for soft landscaping (trees, mounds, planting, turf or general reinstatement). These should be carried out by others.

Exact positions & orientation of new items may be subject to a final site survey and setting out plan.

Any inconsistencies on site should be verified with HAGS before commencement of work.

HAGS recommend that existing trees are risk-assessed by the client to ensure the integrity of accessible branches, that overhanging limbs do not conflict with new play equipment or vehicle access and that the canopy will not produce excessive leaf drop which could cause a hazard within the play area.

This design layout conforms to the relevant EN Safety Standard.

GRASS & GRASS MAT SURFACING

Where equipment is installed directly into grass and the free height of fall is between 0.6m and 1.5m it is the responsibility of the playground operator to ensure that the grass sward is maintained in good order.

Where equipment is installed with grass mat surfacing it is the responsibility of the playground operator to ensure that the grass sward is maintained in good order.

When laid directly onto existing grass this surface will follow the natural contours of the ground unless HAGS have specifically detailed additional preparation/levelling/or turf works.

CUSTOMER
LB Richmond & Wandsworth

PROJECT
Tooting Common Lakeside

TITLE
Play Area Proposal

HAGS[®]

T: 0845 260 1655 E: sales@hags.co.uk W: www.hags.co.uk

DATE: 07/05/24 SCALE: 1:50 @ A1
DRAWN BY: B.C. CHECKED BY: C.C.

DRAWING NUMBER: Q-32411-D6K6-C REVISION: 0