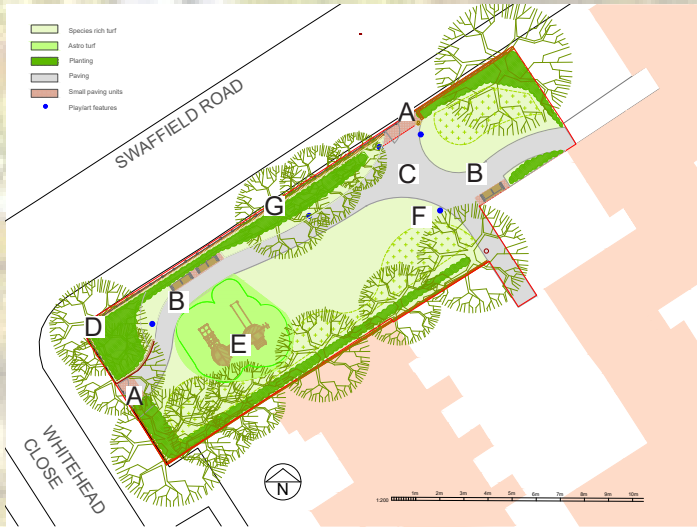


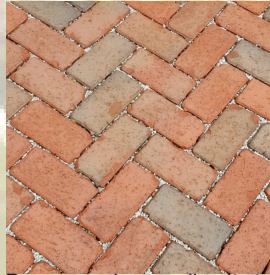
# Option A



## OPTION A

- A - New permeable footpath to link the two entrances with access maintained for adjacent property
- B - Seating areas with bins and signage
- C - Paving with sustainable urban drainage systems
- D - New railing panels within wall to improve visibility
- E - Toddler climbing unit on artificial grass
- F - Play features including magnifying and rubbing posts
- G - Planting for biodiversity with species rich turf and flowering shrubs

### Surfacing and edging



Porous paving small units to define entrance



Sealed gravel



Resin bound mulch or artificial turf

### Furniture and railings



New panels on boundary wall



Chunky robust timber seats



Timber waymarker posts

### Play and features



Small play features

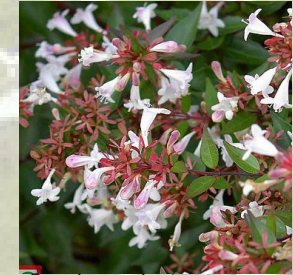


Small climbing frame



Magnifying posts

### Biodiversity



Specimen plants



Autumnal plants for seasonal interest



Species rich turf