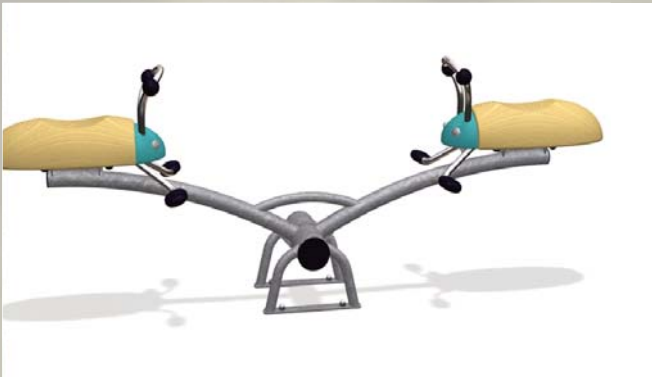
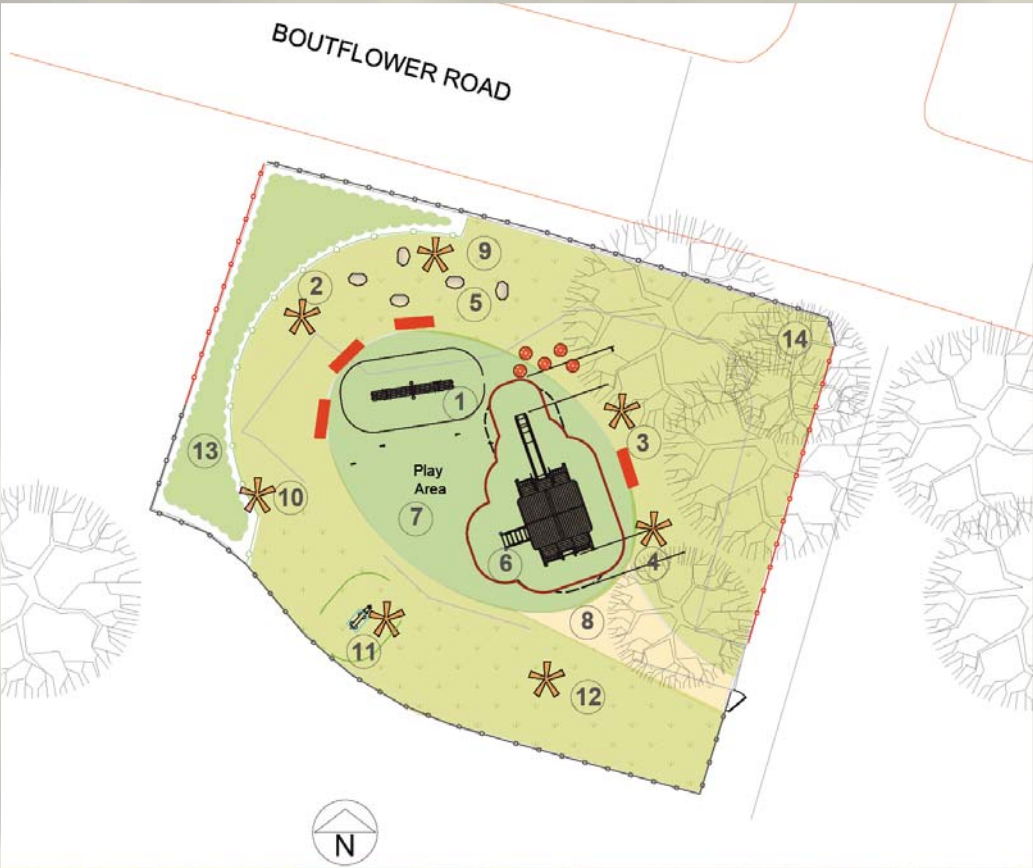


St Mark's Playground Refurbishment Consultation: **Phase 2**

OPTION A

The Ark is for ages 3-10 with a range of challenges including a slide. An animal trail around the play area includes instrumental play features. Some of the play features emerge from the vegetation. These items have been chosen to be accessible whilst providing a challenging play experience for all.



1. Forest Bug see-saw



2. Drums



3. Spiral Scraper



6. Ark play equipment on artificial grass safety surface



4/5. Existing instruments and boulders relocated



13. Evergreen ground cover



12. Crocodile



11. Spring Sheep



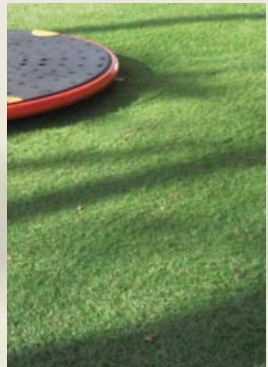
10. Snake



9. Turtle Drum



8. Resin bound gravel



7. Artificial grass



Share your views by completing the online survey at
<https://haveyoursay.citizenspace.com/wandsworthecs/st-marks-playground-round-2>

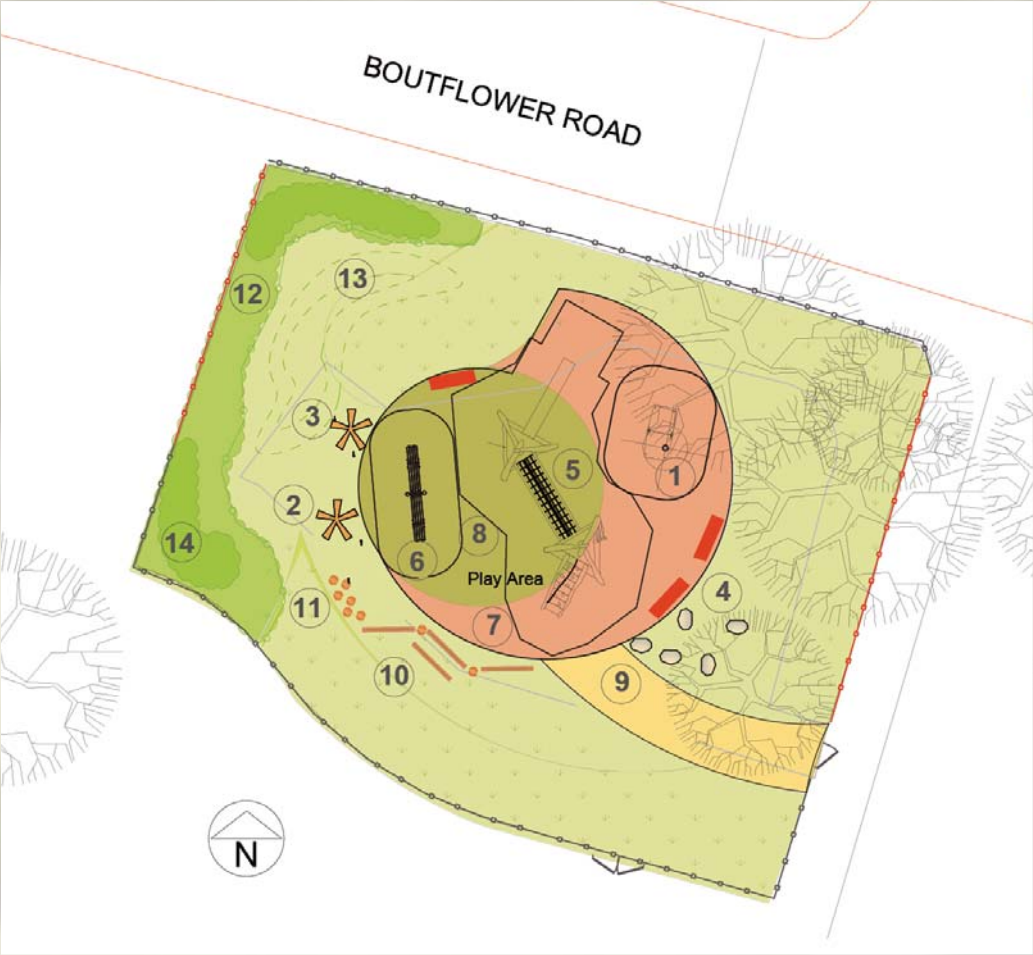


managed by
enable
parks

St Mark's Playground Refurbishment Consultation: **Phase 2**

OPTION B

Timber climbing frame with nets. A musical trail around the play includes instrumental play features. Native style vegetation such as dwarf pines, heather and mass bulb planting to encourage butterflies.



5. Timber Climber by Russel leisure on artificial grass and rubber mulch safety surface



6. Stand Eibe see saw



1. Existing Shelter retained



2/3. Existing instruments relocated



4. Small boulders relocated



14. Dwarf pine ground cover



13. Naturalised bulbs



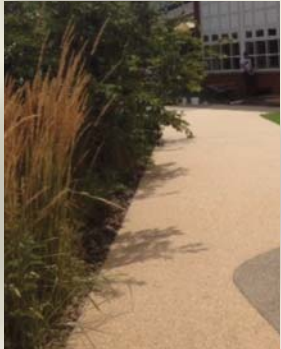
12. Native style planting including heathers



11. Recycled plastic logs



10. Plastic wobble bridge



9. Resin bound gravel



8. Artificial grass



7. Resin bound mulch



Share your views by completing the online survey at
<https://haveyoursay.citizenspace.com/wandsworthecs/st-marks-playground-round-2>



St Mark's Playground Refurbishment Consultation: **Phase 2**

OPTION C

The Climbing frame is for ages 3-10 with a range of challenges including a slide. A see saw and different types of crossing points for balance and agility. A musical trail around the play area includes instrumental play features. Sensory planting provides a backdrop. These items have been chosen to be accessible whilst providing a challenging play experience for all.



1. Resin bounded gravel



2. Spiral Scraper



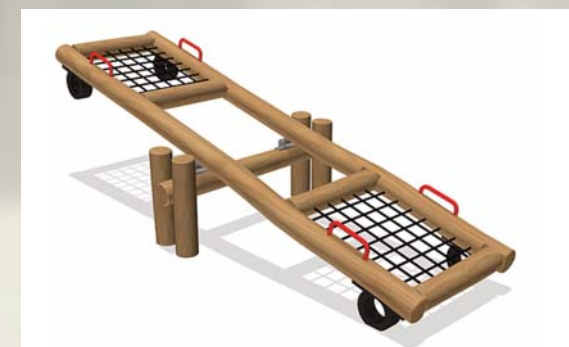
3/4/5. Existing instruments and boulders relocated



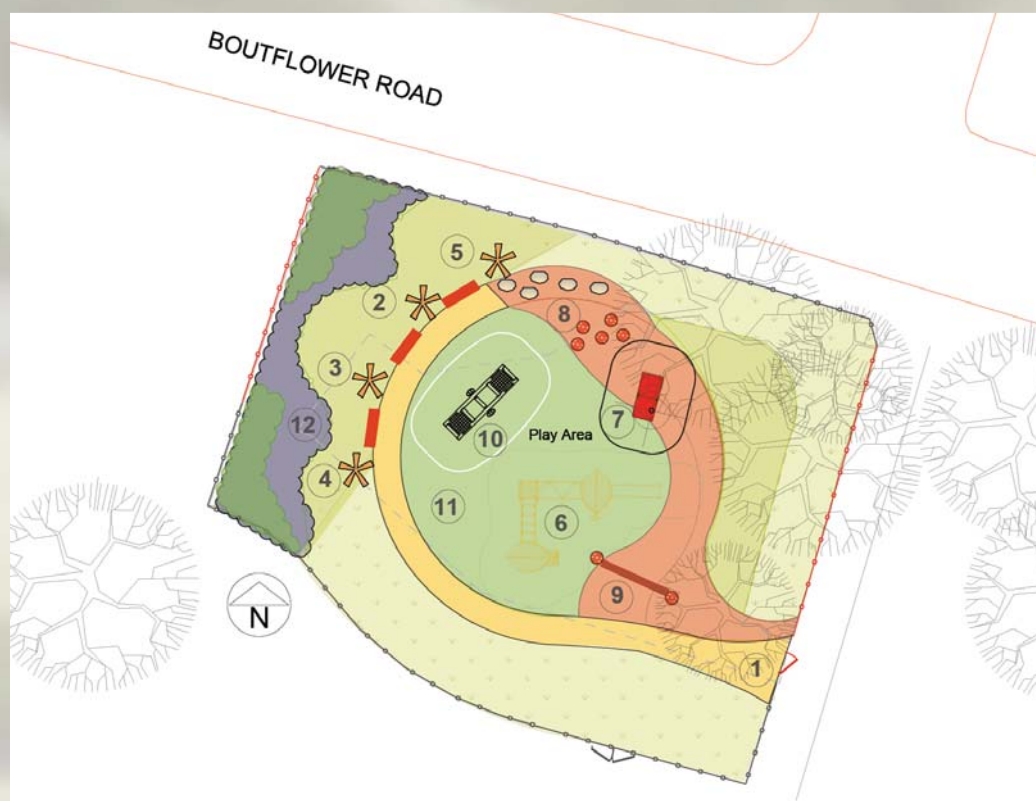
6. Lappset climbing frame on artificial grass safety surface



7. Log Cabin



10. Eibe Paridiso seesaw



12. Sensory planting



12. Sensory planting



11. Atificial grass and boulders



9. Recycled plastic balance weave



8. Recycled plastic posts



Share your views by completing the online survey at
<https://haveyoursay.citizenspace.com/wandsworthecs/st-marks-playground-round-2>



managed by

enable
parks