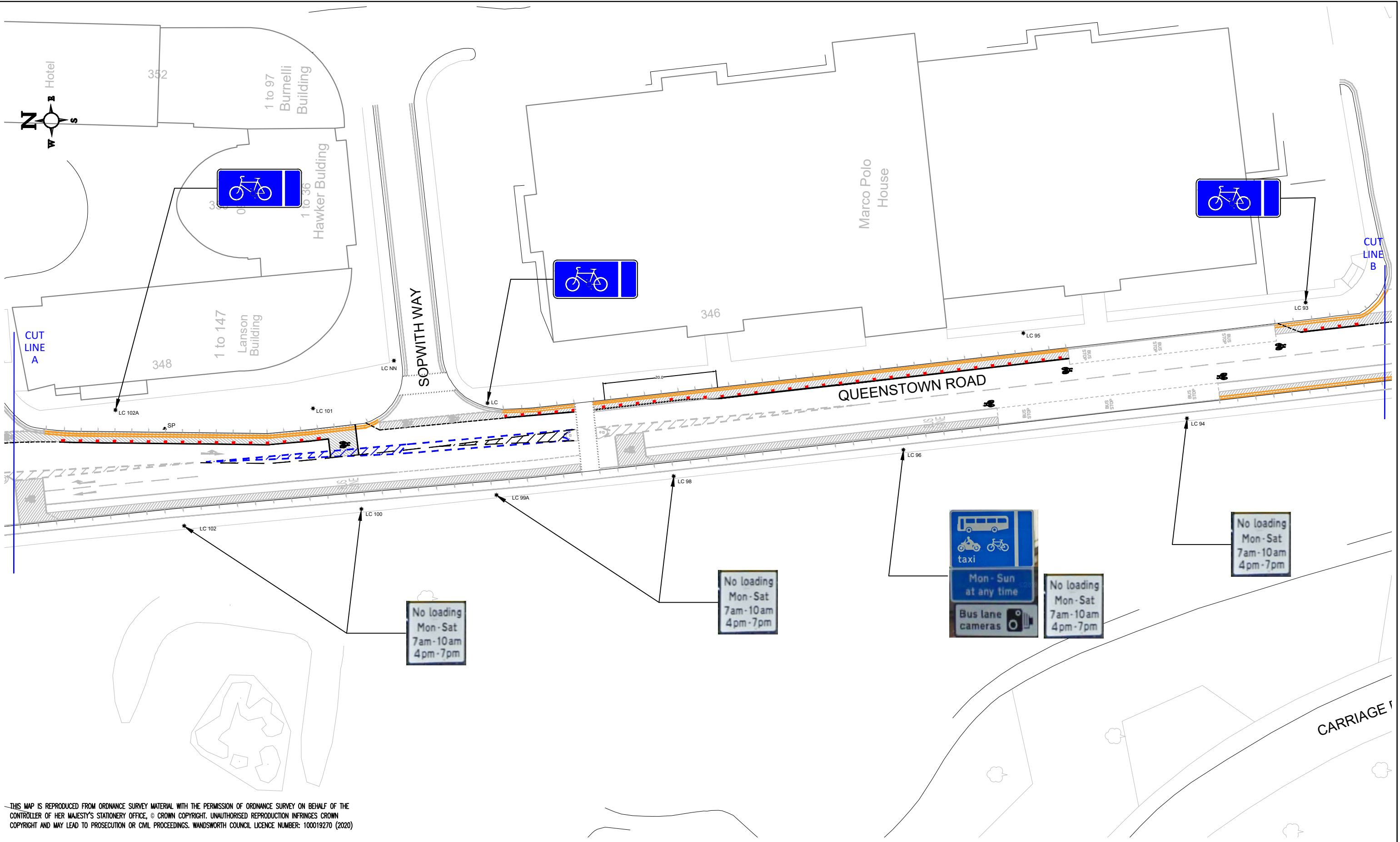


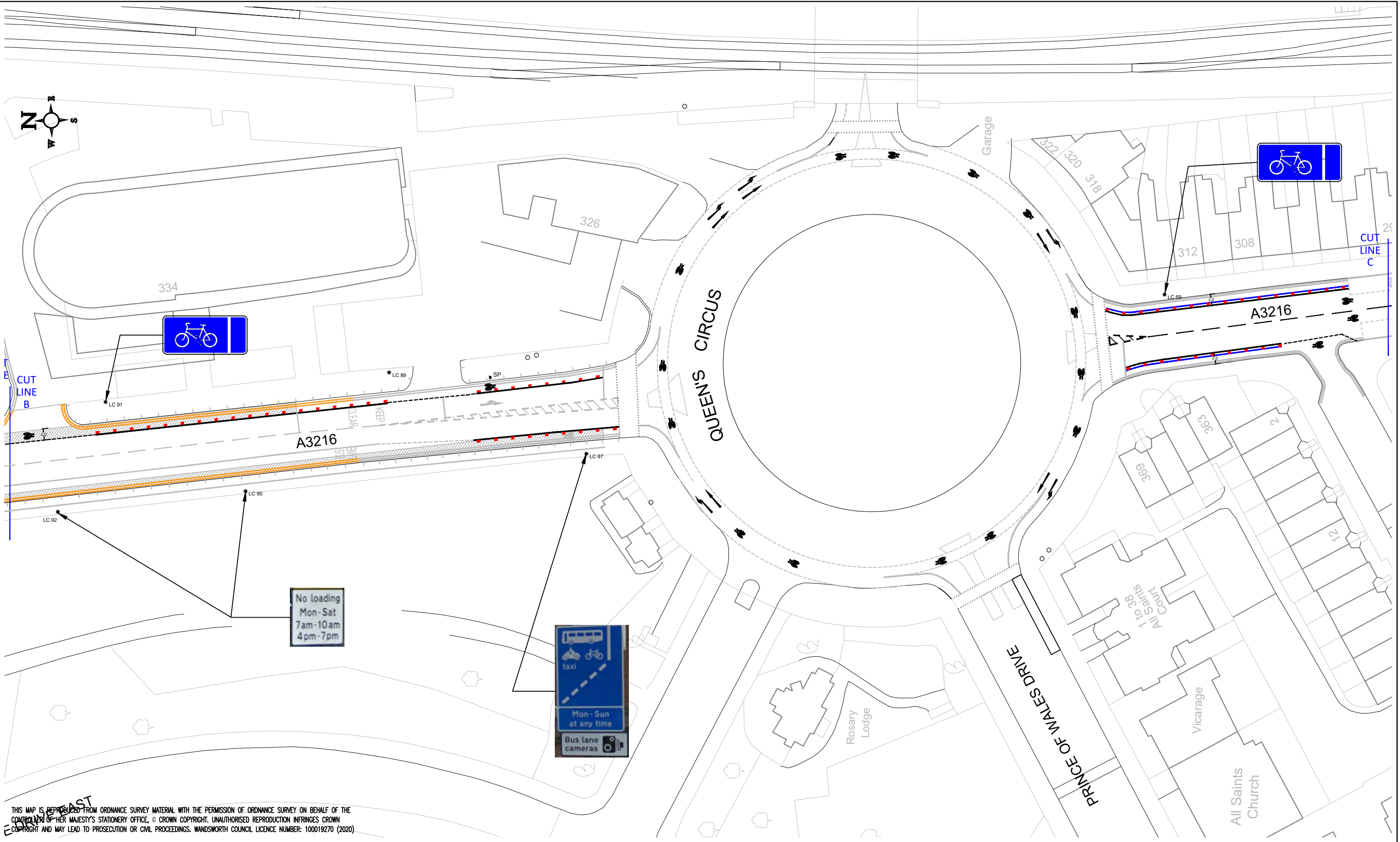
THIS MAP IS REPRODUCED FROM ORDNANCE SURVEY MATERIAL WITH THE PERMISSION OF ORDNANCE SURVEY ON BEHALF OF THE CONTROLLER OF HER MAJESTY'S STATIONERY OFFICE. © CROWN COPYRIGHT. UNAUTHORISED REPRODUCTION INFRINGES CROWN COPYRIGHT AND MAY LEAD TO PROSECUTION OR CIVIL PROCEEDINGS. WANDSWORTH COUNCIL LICENCE NUMBER: 100019270 (2020)

LEGEND <div><div><div><div><div></div><div>Existing lining to be kept/remarked</div></div><div><div></div><div>Proposed road marking – white</div></div><div><div></div><div>Proposed road marking – yellow</div></div><div><div></div><div>Existing lining to be removed</div></div></div><div><div><div><div></div><div>SP Existing sign post to remain</div></div><div><div></div><div>SP Sign post to remove</div></div><div><div></div><div>SP New sign post</div></div><div><div></div><div>SP Sign post to relocate</div></div></div><div><div><div><div></div><div>Proposed Quick-flex resin fix bollards, D80, H1000 spaced 3m c/c</div></div><div><div></div><div>Existing blue coloured surfacing</div></div><div><div></div><div>Existing Lamp Column</div></div></div></div></div></div></div>	<div>Project Title:<div>Proposed Measures Assisting Social Distancing</div></div> <div>Drawing Title:<div>Queenstown Road Signs & Lines Section 1 of 9</div></div>	<div><div><div><div><div></div><div>LONDON BOROUGH OF RICHMOND-UPON-THAMES</div></div><div><div></div><div>Wandsworth</div></div></div><div>RICHMOND AND WANDSWORTH COUNCILS</div></div><div><div>Scale @ A3:<div>NTS</div></div><div>Date:<div>July'20</div></div><div>Drawn By:<div>DR</div></div><div>Checked By:<div>TM</div></div><div>Project No:<div>P001745</div></div></div><div><div>Environment and Community Services Department</div><div>Drawing No:<div>ECS/P1745/01</div></div><div>Revision:</div></div></div>
--	--	---



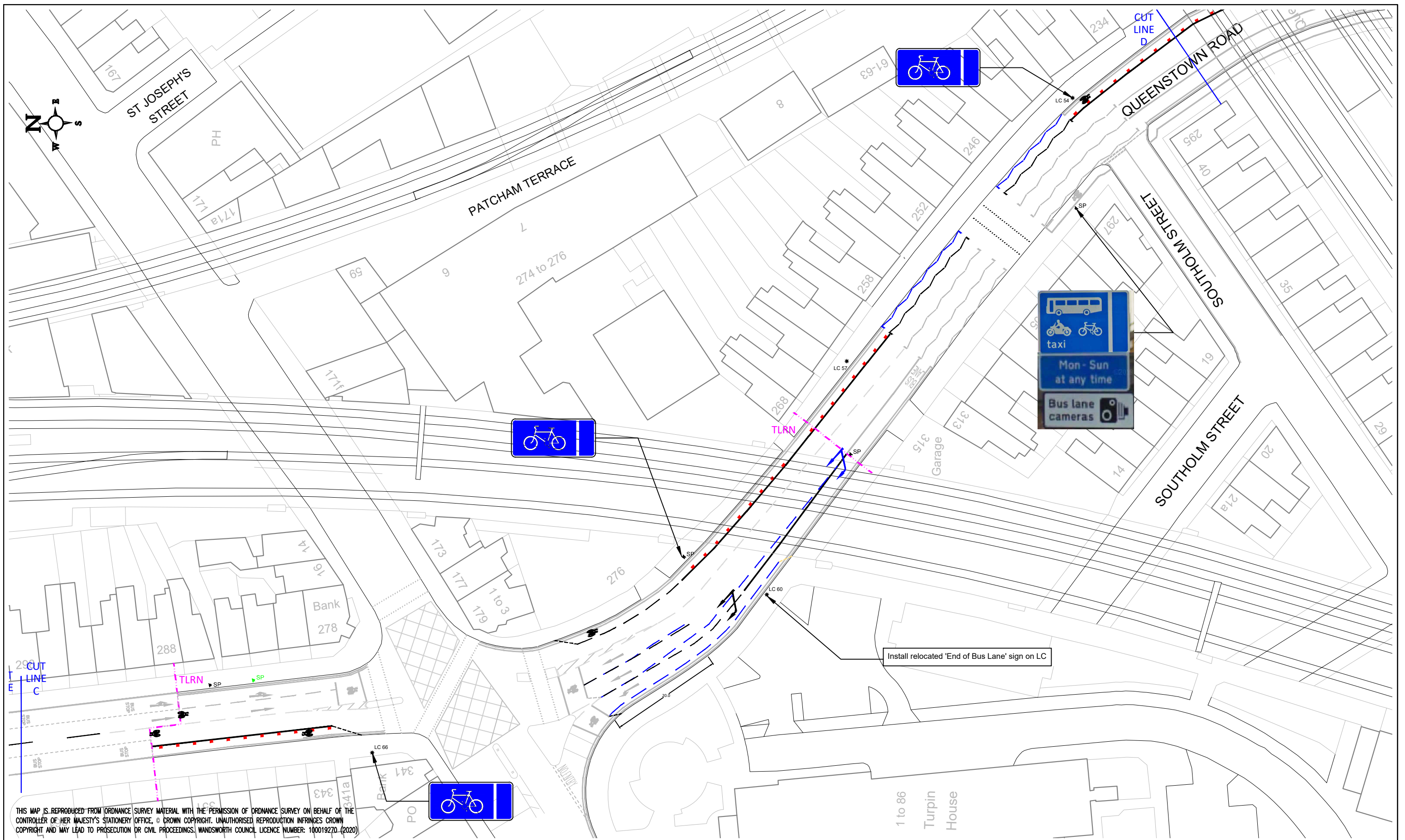
THIS MAP IS REPRODUCED FROM ORDNANCE SURVEY MATERIAL WITH THE PERMISSION OF ORDNANCE SURVEY ON BEHALF OF THE CONTROLLER OF HER MAJESTY'S STATIONERY OFFICE, © CROWN COPYRIGHT. UNAUTHORISED REPRODUCTION INFRINGES CROWN COPYRIGHT AND MAY LEAD TO PROSECUTION OR CIVIL PROCEEDINGS. WANDSWORTH COUNCIL LICENCE NUMBER: 100019270 (2020)

LEGEND <div><div><div><div><div></div><div>Existing lining to be kept/remarked</div></div><div><div></div><div>Proposed road marking – white</div></div><div><div></div><div>Proposed road marking – yellow</div></div><div><div></div><div>Existing lining to be removed</div></div></div><div><div><div><div></div><div>SP Existing sign post to remain</div></div><div><div></div><div>SP Sign post to remove</div></div><div><div></div><div>SP New sign post</div></div><div><div></div><div>SP Sign post to relocate</div></div></div><div><div><div><div></div><div>Proposed Quick-flex resin fix bollards, D80, H1000 spaced 3m c/c</div></div><div><div></div><div>Existing blue coloured surfacing</div></div><div><div></div><div>Existing Lamp Column</div></div></div></div></div></div></div>	<div>Project Title:</div> <div>Proposed Measures Assisting Social Distancing</div> <div>Drawing Title:</div> <div>Queenstown Road Signs & Lines Section 2 of 9</div>	<div><div><div><div><div></div><div>LONDON BOROUGH OF RICHMOND-UPON-THAMES</div></div><div><div></div><div>Wandsworth</div></div></div><div>RICHMOND AND WANDSWORTH COUNCILS</div><div><div>Scale @ A3: NTS</div><div>Drawn By: DR</div><div>Date: July'20</div><div>Checked By: TM</div></div><div>Project No: P001745</div><div>Drawing No: ECS/P1745/02</div><div>Revision:</div></div><div>ENVIRONMENT AND COMMUNITY SERVICES DEPARTMENT</div></div>
--	--	--





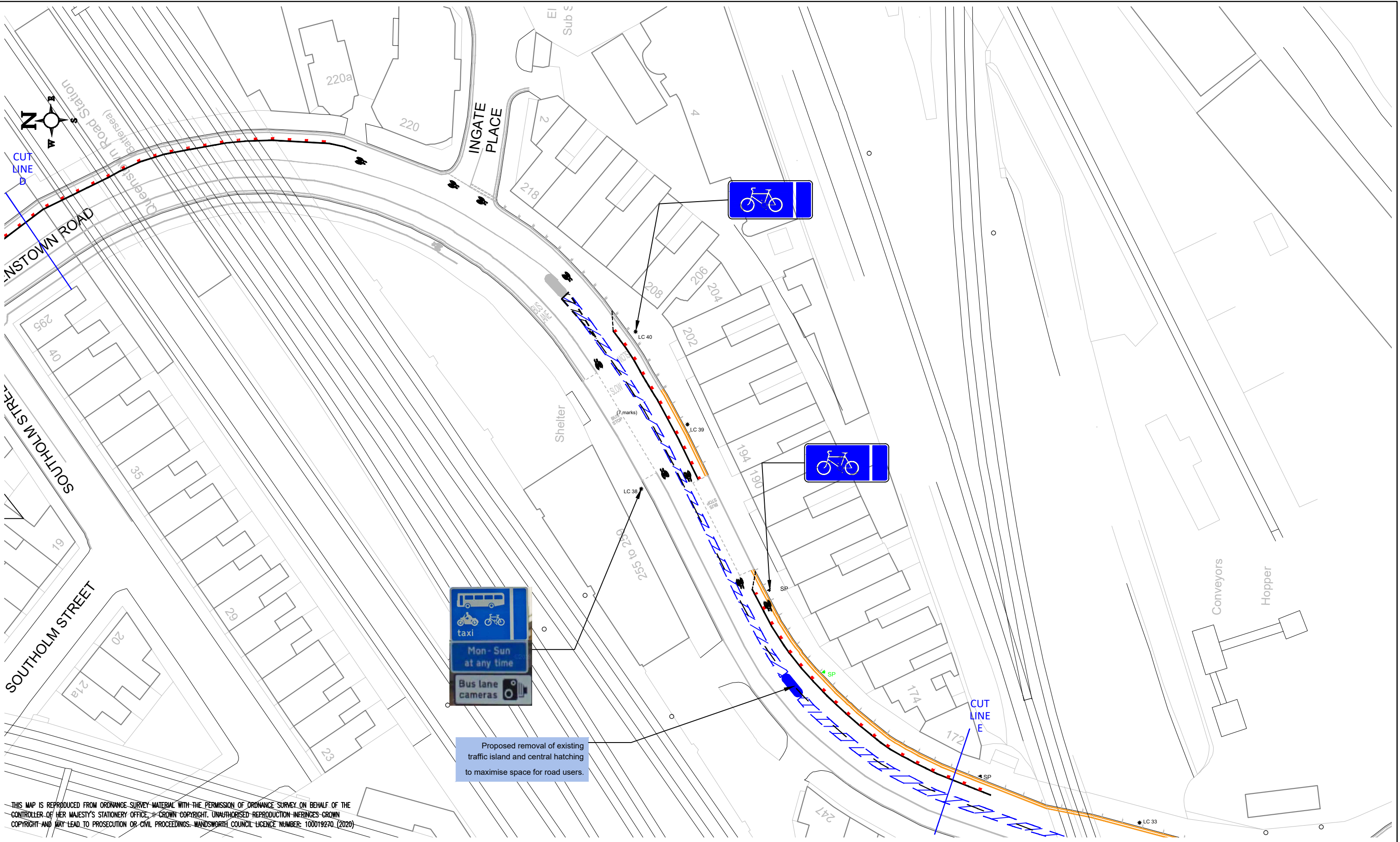
THIS MAP IS REPRODUCED FROM ORDNANCE SURVEY MATERIAL WITH THE PERMISSION OF ORDNANCE SURVEY ON BEHALF OF THE CONTROLLER OF HER MAJESTY'S STATIONERY OFFICE. © CROWN COPYRIGHT. UNAUTHORISED REPRODUCTION INFRINGES CROWN COPYRIGHT AND MAY LEAD TO PROSECUTION OR CIVIL PROCEEDINGS. WANDSWORTH COUNCIL LICENCE NUMBER: 100019270 (2020)

LEGEND <div><div><div><div><div></div><div>Existing lining to be kept/remarked</div></div><div><div></div><div>Proposed road marking – white</div></div><div><div></div><div>Proposed road marking – yellow</div></div><div><div></div><div>Existing lining to be removed</div></div></div><div><div><div><div>SP</div><div>Existing sign post to remain</div></div><div><div>SP</div><div>Sign post to remove</div></div><div><div>SP</div><div>New sign post</div></div><div><div>SP</div><div>Sign post to relocate</div></div></div><div><div><div><div></div><div>Proposed Quick-flex resin fix bollards, D80, H1000 spaced 3m c/c</div></div><div><div></div><div>Existing blue coloured surfacing</div></div><div><div>LC</div><div>Existing Lamp Column</div></div></div></div></div></div></div>		Project Title: Proposed Measures Assisting Social Distancing		 RICHMOND AND WANDSWORTH COUNCILS		ENVIRONMENT AND COMMUNITY SERVICES DEPARTMENT	
Drawing Title: Queenstown Road Signs & Lines Section 3 of 9		Scale @ A3: NTS Date: July'20		Drawn By: DR Checked By: TM	Project No: P001745	Drawing No: ECS/P1745/03	Revision:





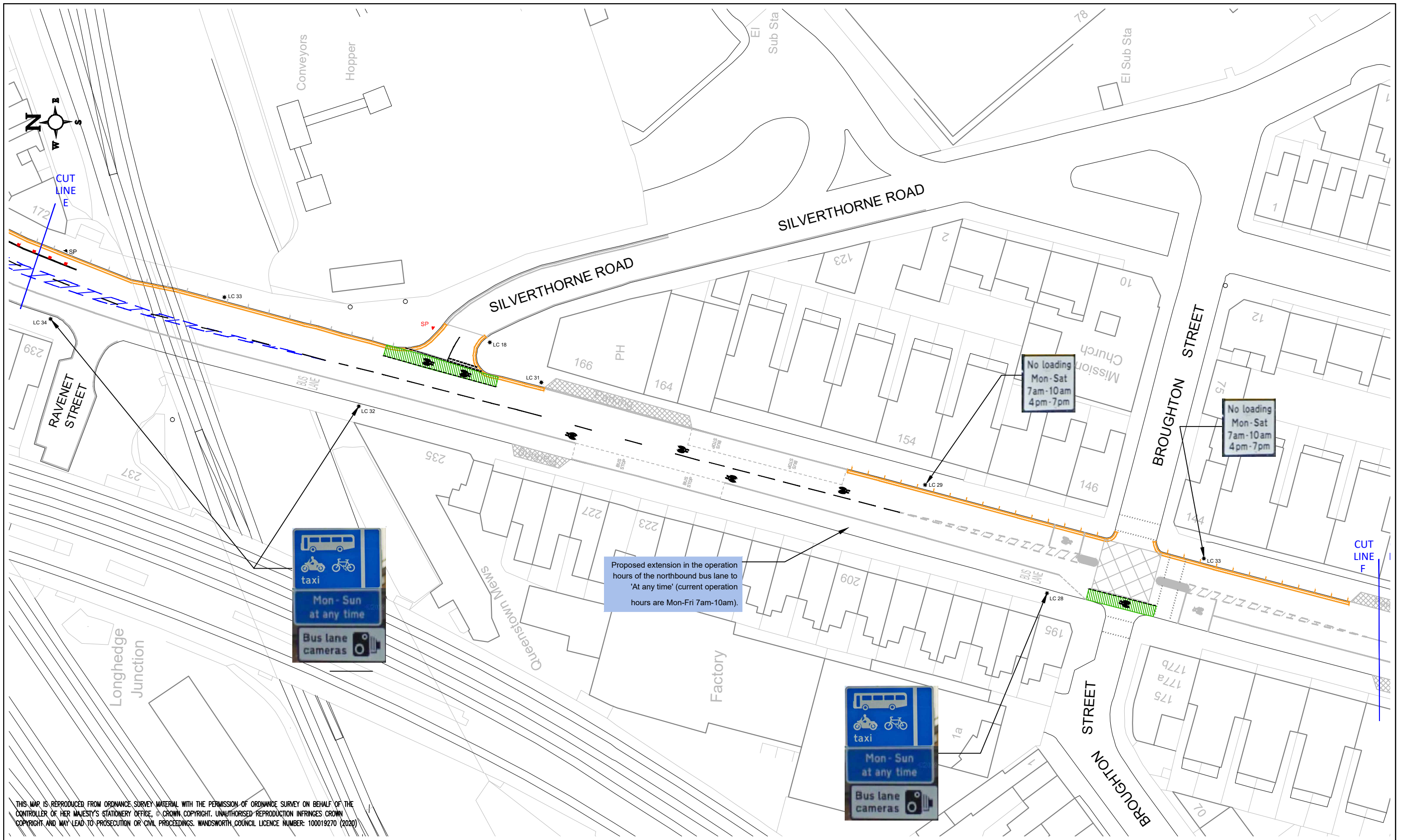
THIS MAP IS REPRODUCED FROM ORDNANCE SURVEY MATERIAL WITH THE PERMISSION OF ORDNANCE SURVEY ON BEHALF OF THE CONTROLLER OF HER MAJESTY'S STATIONERY OFFICE. © CROWN COPYRIGHT. UNAUTHORISED REPRODUCTION INFRINGES CROWN COPYRIGHT AND MAY LEAD TO PROSECUTION OR CIVIL PROCEEDINGS. WANDSWORTH COUNCIL LICENCE NUMBER: 100019270 (2020)

<p>LEGEND</p> <ul style="list-style-type: none"> Existing lining to be kept/remarked Proposed road marking – white Proposed road marking – yellow Existing lining to be removed SP Existing sign post to remain SP Sign post to remove SP New sign post SP Sign post to relocate Proposed Quick-flex resin fix bollards, D80, H1000 spaced 3m c/c LC Existing Lamp Column 	<p>Project Title:</p> <p>Proposed Measures Assisting Social Distancing</p> <p>Drawing Title:</p> <p>Queenstown Road Signs & Lines Section 4 of 9</p>	<div>   </div> <p>RICHMOND AND WANDSWORTH COUNCILS</p> <p>Scale: A3: NTS Date: July'20</p> <p>Drawn By: DR Checked By: TM</p> <p>Project No: P001745</p> <p>Drawing No: ECS/P1745/04 Revision:</p> <p>ENVIRONMENT AND COMMUNITY SERVICES DEPARTMENT</p>
--	--	---



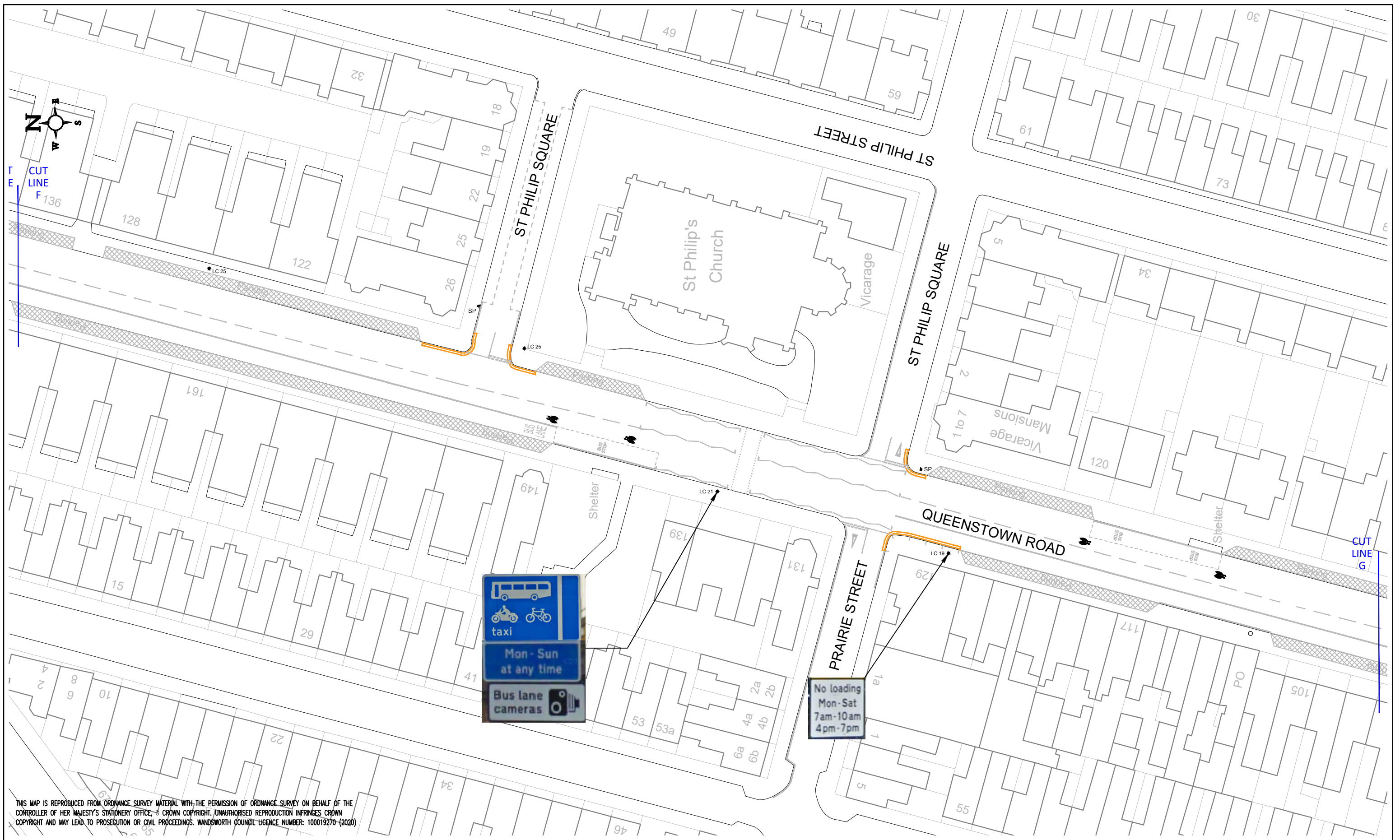
THIS MAP IS REPRODUCED FROM ORDNANCE SURVEY MATERIAL WITH THE PERMISSION OF ORDNANCE SURVEY ON BEHALF OF THE CONTROLLER OF HER MAJESTY'S STATIONERY OFFICE. © CROWN COPYRIGHT. UNAUTHORISED REPRODUCTION INFRINGES CROWN COPYRIGHT AND MAY LEAD TO PROSECUTION OR CIVIL PROCEEDINGS. WANDSWORTH COUNCIL LICENCE NUMBER: 100019270 (2020)



LEGEND			Project Title:			Proposed Measures Assisting Social Distancing			 			ENVIRONMENT AND COMMUNITY SERVICES DEPARTMENT		
Existing lining to be kept/remarked			SP Existing sign post to remain			Proposed Quick-flex resin fix bollards, D80, H1000 spaced 3m c/c			RICHMOND AND WANDSWORTH COUNCILS					
Proposed road marking – white			SP Sign post to remove			Existing Lamp Column			Drawing Title:			Queenstown Road Signs & Lines Section 5 of 9		
Proposed road marking – yellow			SP New sign post			Proposed green coloured surfacing			Scale @ A3:			NTS		
Existing lining to be removed			SP Sign post to relocate						Date:			July'20		
									Drawn By:			DR		
									Checked By:			TM		
									Project No:			P001745		
									Drawing No:			ECS/P1745/05		
									Revision:					

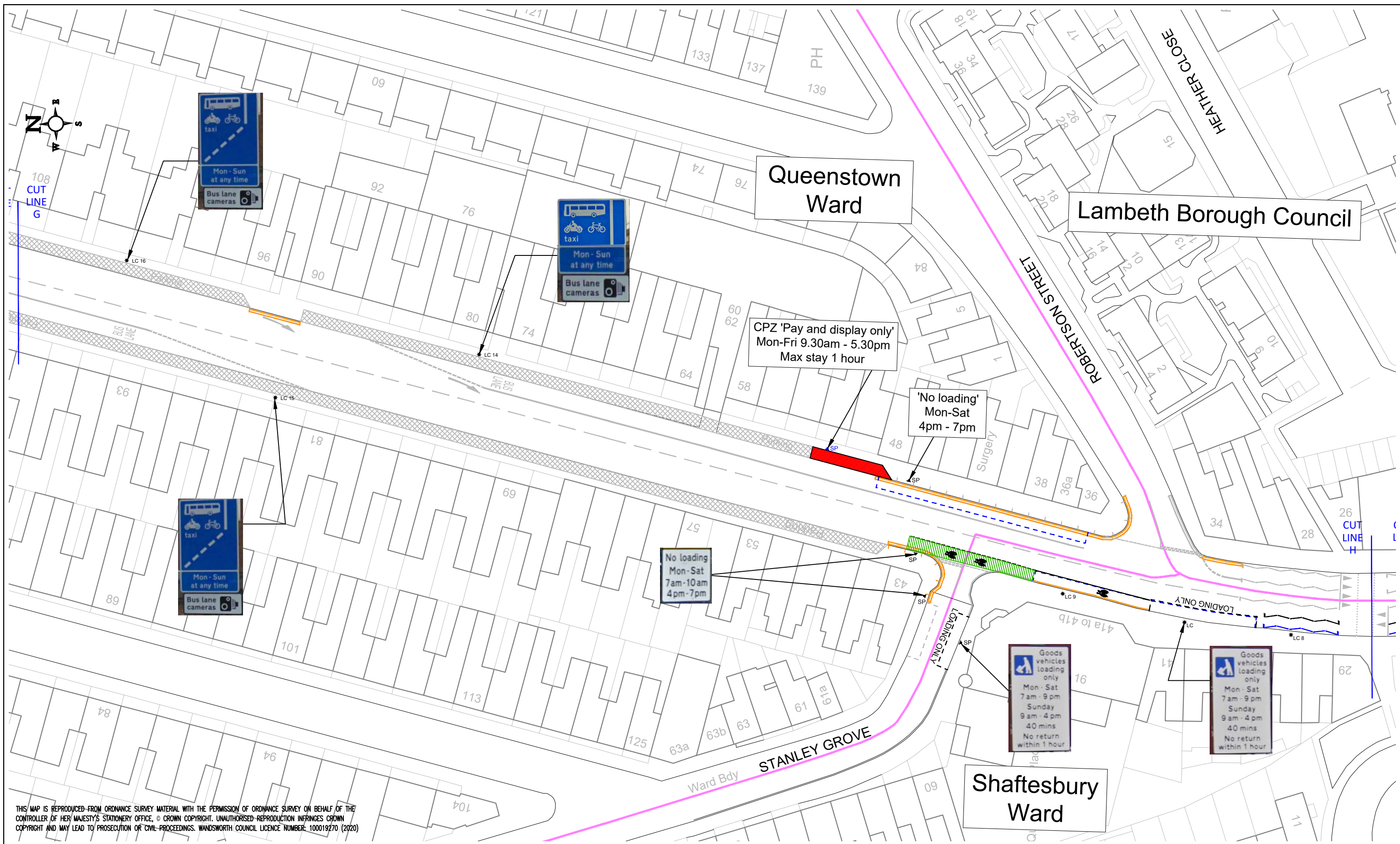


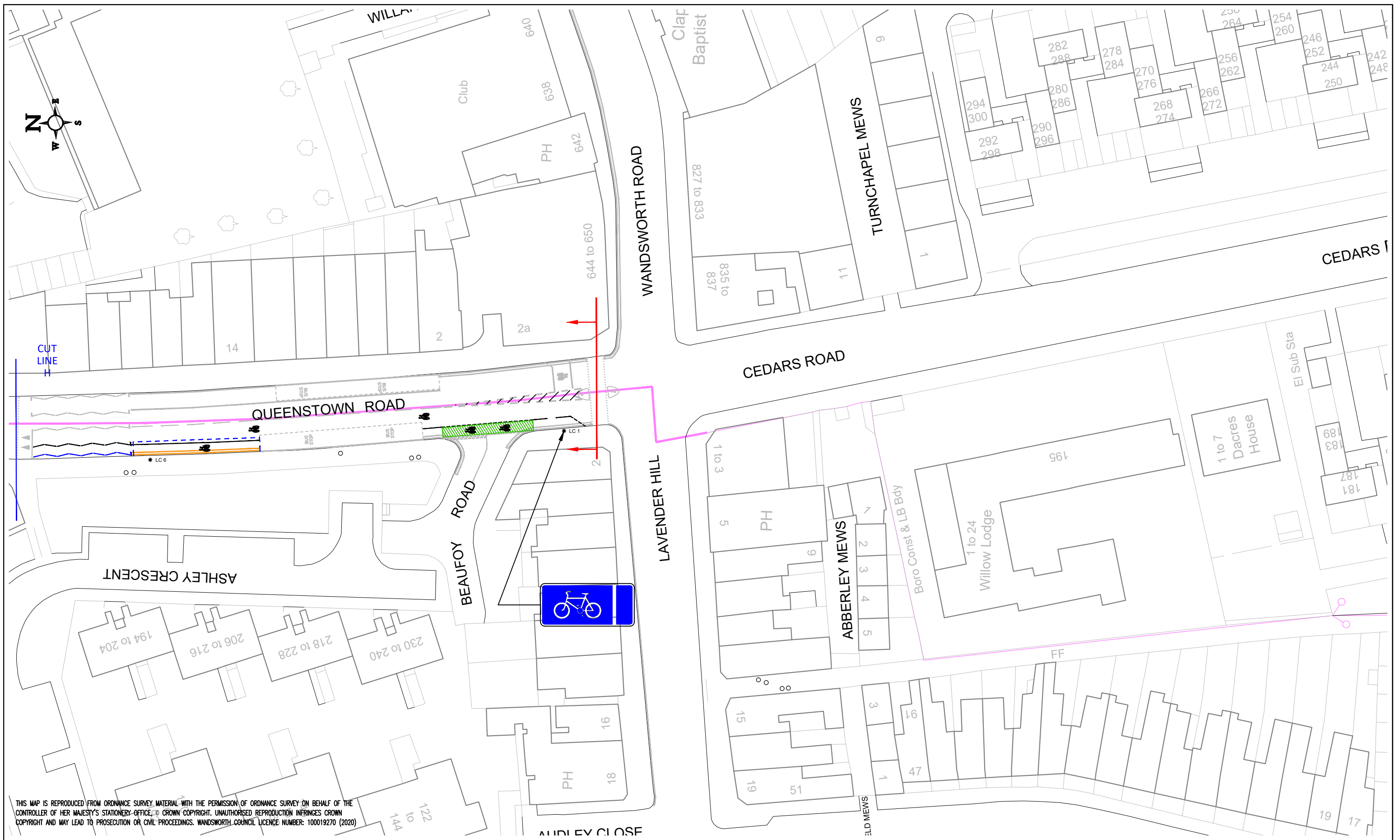
<div>LEGEND</div> <div><div><div><div></div><div>Existing lining to be kept/remarked</div></div><div><div></div><div>Proposed road marking – white</div></div><div><div></div><div>Proposed road marking – yellow</div></div><div><div></div><div>Existing lining to be removed</div></div></div><div><div><div><div></div><div>SP Existing sign post to remain</div></div><div><div></div><div>SP Sign post to remove</div></div><div><div></div><div>SP New sign post</div></div><div><div></div><div>SP Sign post to relocate</div></div></div><div><div><div><div></div><div>Proposed Quick-flex resin fix bollards, D80, H1000 spaced 3m c/c</div></div><div><div></div><div>Existing Lamp Column</div></div><div><div></div><div>Proposed green coloured surfacing</div></div></div></div></div></div>			<div>Project Title:</div> <div>Proposed Measures Assisting Social Distancing</div>	<div><div><div><div><div></div><div>LONDON BOROUGH OF RICHMOND-UPON-THAMES</div></div><div><div></div><div>Wandsworth</div></div></div><div>RICHMOND AND WANDSWORTH COUNCILS</div></div><div><div>Scale @ A3:NTS</div><div>Drawn By:DR</div><div>Project No:</div></div><div><div>Date:July'20</div><div>Checked By:TM</div><div>P001745</div></div><div><div>ENVIRONMENT AND COMMUNITY SERVICES DEPARTMENT</div><div>Drawing No: ECS/P1745/06</div><div>Revision:</div></div></div>
			<div>Drawing Title:</div> <div>Queenstown Road Signs & Lines Section 6 of 9</div>	



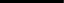










THIS MAP IS REPRODUCED FROM ORDNANCE SURVEY MATERIAL WITH THE PERMISSION OF ORDNANCE SURVEY ON BEHALF OF THE CONTROLLER OF HER MAJESTY'S STATIONERY OFFICE. © CROWN COPYRIGHT. UNAUTHORISED REPRODUCTION INFRINGES CROWN COPYRIGHT AND MAY LEAD TO PROSECUTION OR CIVIL PROCEEDINGS. WANDSWORTH COUNCIL LICENCE NUMBER: 100019270 (2020)



LEGEND <div> <div>Existing lining to be kept/remarked</div> <div>Proposed road marking - white</div> <div>Proposed road marking - yellow</div> <div>Existing lining to be removed</div> </div> <div> <div>SP Existing sign post to remain</div> <div>SP Sign post to remove</div> <div>SP New sign post</div> <div>SP Sign post to relocate</div> </div> <div> <div>Proposed Quick-flex resin fix bollards, D80, H1000 spaced 3m c/c</div> <div>Existing Lamp Column</div> <div>Proposed green coloured surfacing</div> </div>			Project Title: Proposed Measures Assisting Social Distancing	  RICHMOND AND WANDSWORTH COUNCILS <div> <div>Scale: A3: NTS</div> <div>Date: July '20</div> </div> <div> <div>Drawn By: DR</div> <div>Checked By: TM</div> </div> <div> <div>Project No: P001745</div> <div>Drawing No: ECS/P1745/07</div> </div> <div> <div>Environment and Community Services Department</div> <div>Revision:</div> </div>
			Drawing Title: Queenstown Road Signs & Lines Section 7 of 9	





LEGEND	 Existing lining to be kept/remarked	 Proposed road marking – white	 Proposed road marking – yellow	 Existing lining to be removed	 SP Existing sign post to remain	 SP Sign post to remove	 SP New sign post	 SP Sign post to relocate	 Proposed Quick–flex resin fix bollards, D80, H1000 spaced 3m c/c	 LC Existing Lamp Column	 Proposed green coloured surfacing
	<div>Project Title: Proposed Measures Assisting Social Distancing</div> <div>Drawing Title: Queenstown Road Signs & Lines Section 9 of 9</div>										
<div> RICHMOND AND WANDSWORTH COUNCILS</div>									<div>ENVIRONMENT AND COMMUNITY SERVICES DEPARTMENT</div>		
<div>Scale @ A3: NTS</div>			<div>Drawn By: DR</div>			<div>Project No:</div>			<div>Drawing No: ECS/P1745/09</div>		
<div>Date: July'20</div>			<div>Checked By: TM</div>			<div>P001745</div>			<div>Revision:</div>		