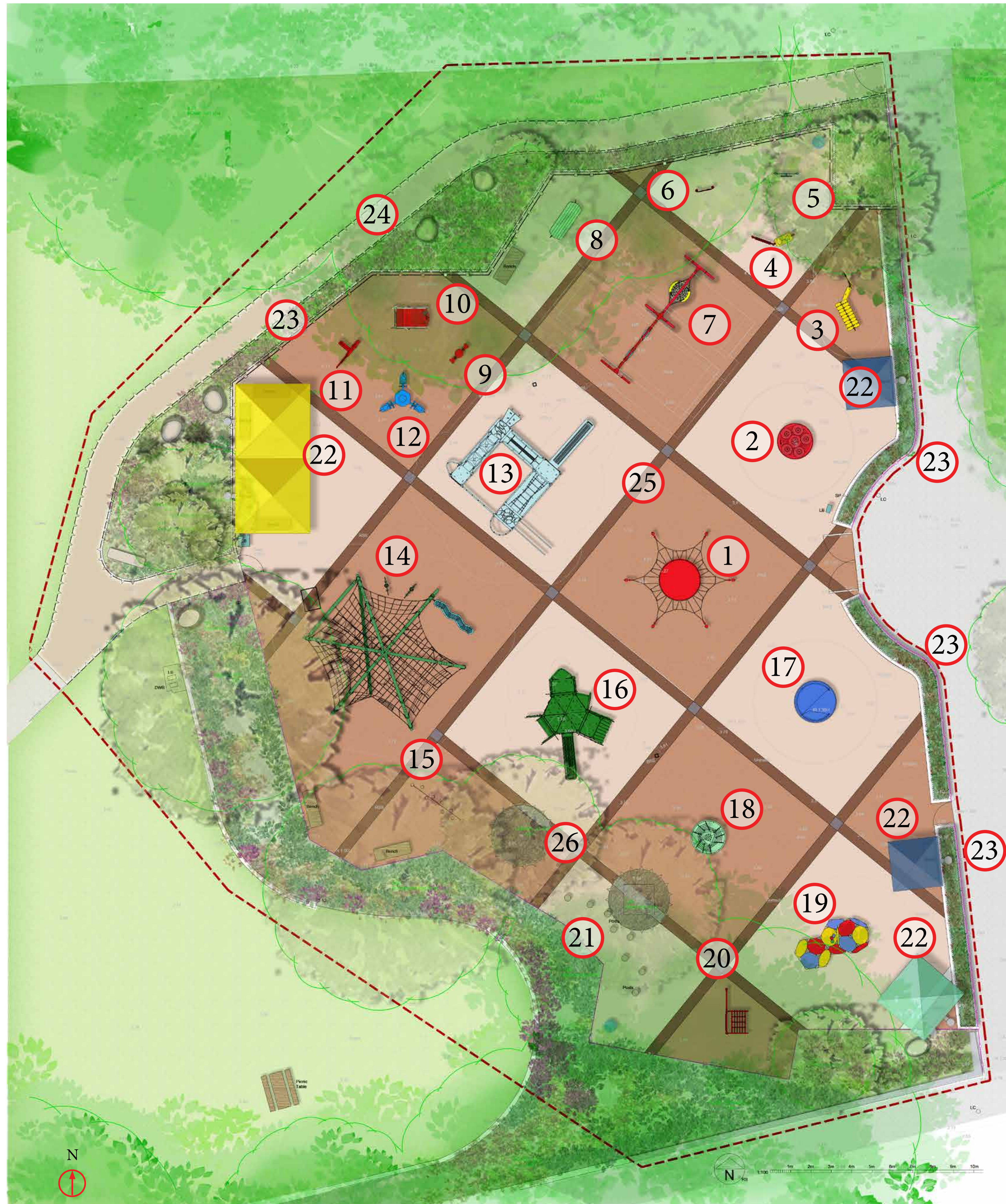


## Option 2: Playground Inspired by Edwardian Mosaics

This design again takes inspiration from the Edwardian era and reflects the patterns of floor mosaics from that time. It uses bold square shapes and sharp lines to create distinct play zones for different age groups.



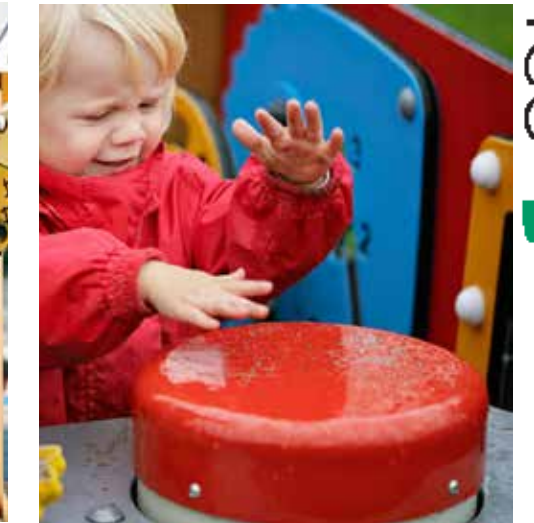
1 Proposed Play Equipment - Hexagonal Jumping Net



2 Proposed Play Equipment - Multispinner Carousel, Teal



3 Proposed Play Equipment - Ice Cream Cart



4 Proposed Play Equipment - Play Panel High 2 - Music



5 Proposed Play Equipment - Play Panel 1 - Maze



6 Proposed Play Equipment - Sensory Multi Play Panel



7 Proposed Play Equipment - Steel Swing H:2.5m, 100cm Rope Seat, Anti-wrap



8 Proposed Play Equipment - Play & Learn Blackboard



9 Proposed Play Equipment - Toddler Equipment Pony Seesaw



10 Proposed Play Equipment - Double Car



11 Proposed Play - Toddler Equipment - Creative Workshop



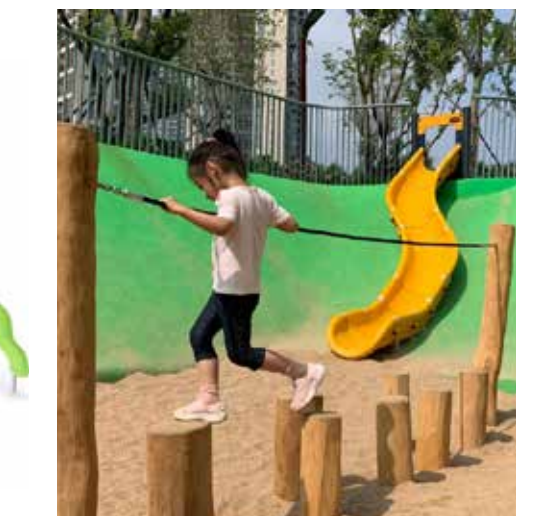
12 Proposed Play Equipment - Blazer



13 Proposed Play Equipment - Four Tower with Roofs



14 Proposed Play Equipment - Explorer Dome



15 Existing Play Equipment - Balance Posts with Rope



16 Proposed Play Equipment - Hangout Tree with Hideaway



17 Proposed Play Equipment - Wheelchair Carousel



18 Proposed Play - Inclusive Twister



19 Proposed Play Equipment - Climbing Structure - BLOQX 3



20 Proposed Play Equipment - Vertical Net / Wall



21 Existing Play Equipment - Timber Posts to be retained and refurbished/replaced/relocated



22 Proposed Shade - Cantilever Umbrella - Vary Size



23 Proposed Green Buffer - Hedge/Shrub Mix



24 Proposed New Path- Permeable Resin Bound Gravel



25 Proposed Play Equipment - New Porous Rubber Granules Playground Safety Surface



26 Proposed Tree Pit / Surfacing Close to Tree - New Porous Rubber Mulch