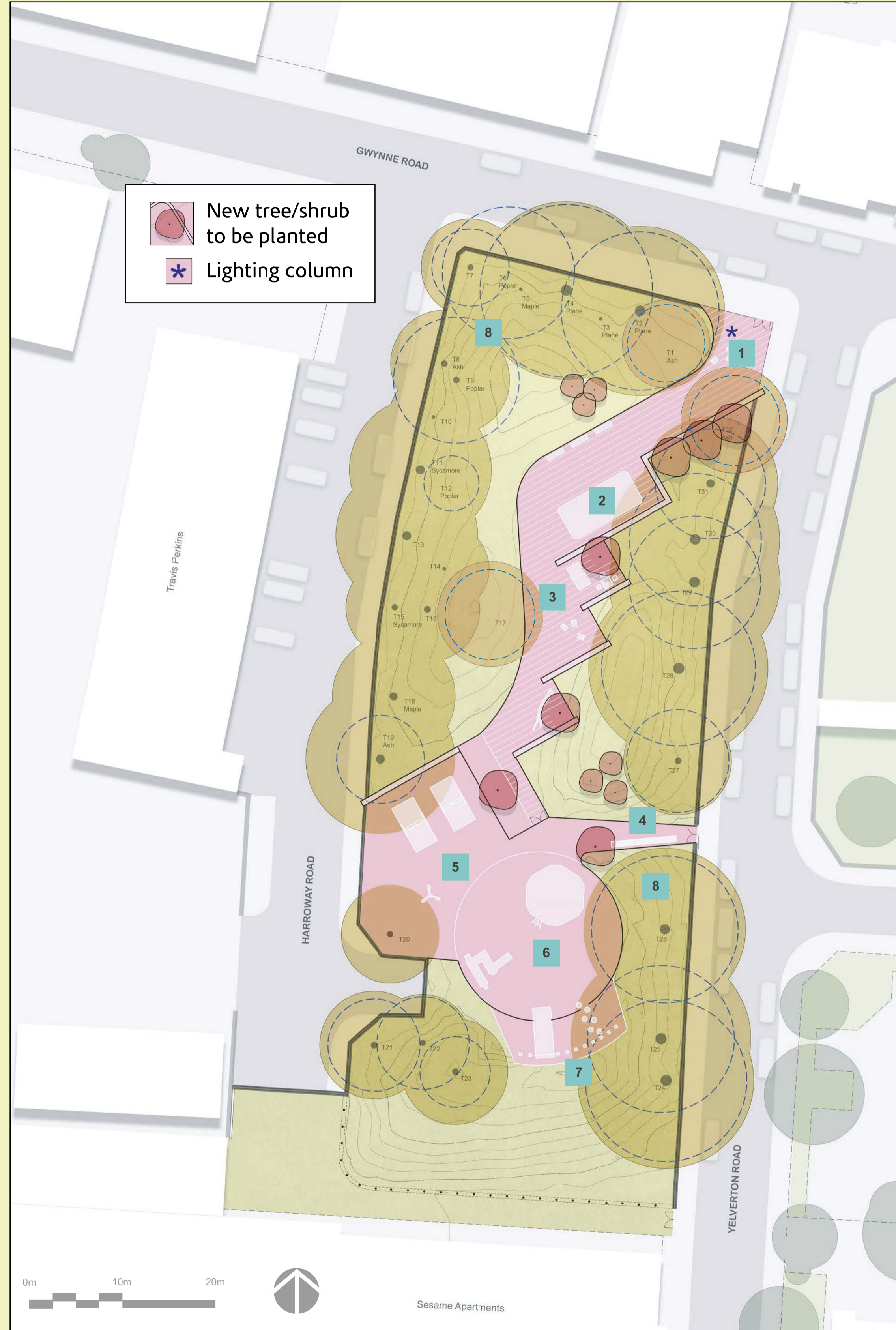


DESIGN OPTION ONE: PARK VALLEY GARDENS



Photos used to communicate design principles and included for illustrative purposes only. Final built elements likely to vary.

KEY

- 1 New accessible entrance at park corner with architectural lighting column, wall, park sign and planting. Railing and gate on perimeter.
- 2 Outdoor exercise area, with possible gym equipment.
- 3 Valley garden with walls, planting seats, chess tables and table tennis. Route formed of grasscrete paving as Sustainable Urban Drainage System.
- 4 Existing entrance widened and made more welcoming.
- 5 Existing swings and toddler play elements re-used and relocated to make better use of the space.
- 6 Children's playground enlarged and junior play element replaced.
- 7 Banks re-profiled to make steeper and create playable landscape, including slide and stepping logs.
- 8 Groups of specimen shrubs for biodiversity and seasonal interest.



Please be advised that the consultation closes on **Thursday 6 January 2022**.
For more information please email parks@enablelc.org or call (020) 3959 0060.



DESIGN OPTION TWO: PARK CORNER



Furniture	Surfacing & Edging	Play	Planting	Environment

Photos used to communicate design principles and included for illustrative purposes only. Final built elements likely to vary.

KEY

- 1 New accessible entrance and mini square at park corner with architectural lighting column, seating, park sign and planting.
- 2 Mounds retained for sitting and lying in sun.
- 3 Outdoor exercise area, with possible gym equipment.
- 4 Existing entrance widened and made more welcoming.
- 5 Existing swings retained
- 6 Existing toddler play element retained
- 7 Existing junior play element retained
- 8 Groups of specimen shrubs for biodiversity and seasonal interest.

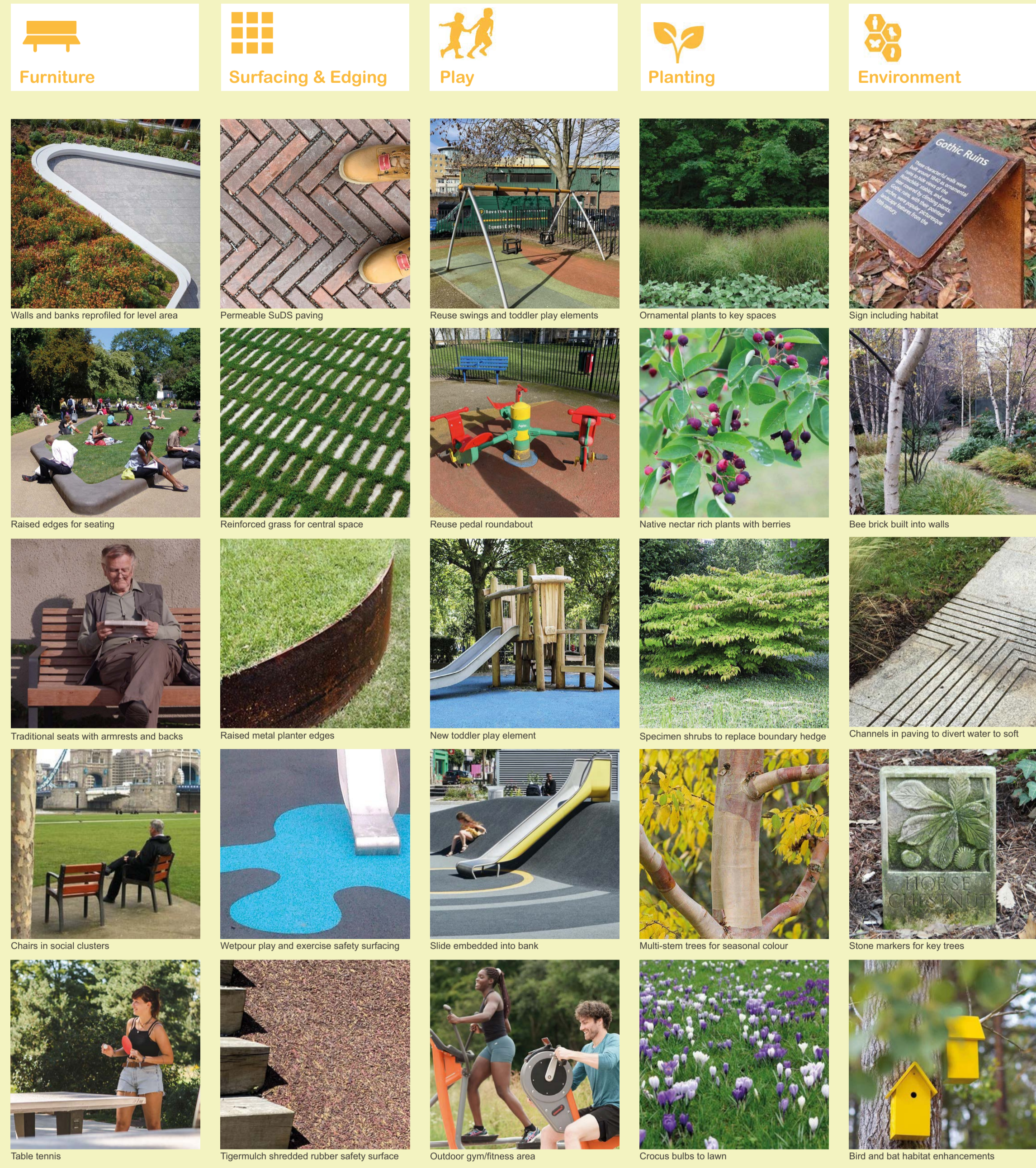


Please be advised that the consultation closes on **Thursday 6 January 2022**.
For more information please email parks@enablelc.org or call (020) 3959 0060.



Designed and produced by Wandswoth Design & Print. wdfp@wandswoth.gov.uk MUJ.254 Boards (10.21)

DESIGN OPTION THREE: PARK HEART



Photos used to communicate design principles and included for illustrative purposes only. Final built elements likely to vary.

KEY

- 1 New accessible entrance at park corner with architectural lighting column, park sign and planting.
- 2 New, level relaxation and social heart.
- 3 Existing swings reused and relocated.
- 4 Existing entrance widened and made more welcoming.
- 5 New table tennis table
- 6 Outdoor exercise area, with possible gym equipment.
- 7 Existing playground junior and toddler play element replaced with new and banks utilised to create playable landscape.
- 8 Groups of specimen shrubs for biodiversity and seasonal interest.



Please be advised that the consultation closes on **Thursday 6 January 2022**.
For more information please email parks@enablelc.org or call (020) 3959 0060.



Designed and produced by Wandsworth Design & Print. wdfp@wandsworth.gov.uk MUJ.254 Boards (10.21)