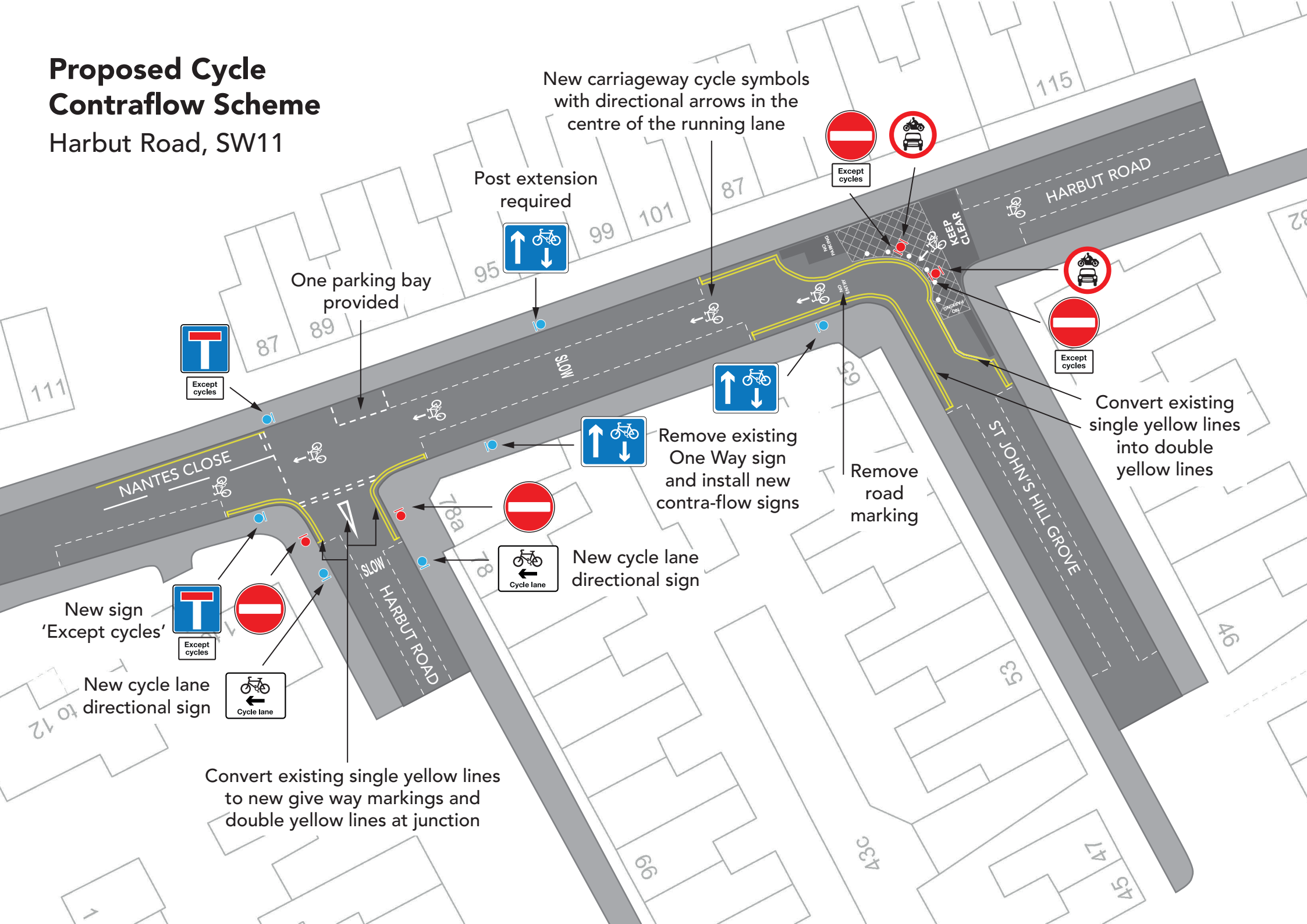


Proposed Cycle Contraflow Scheme

Harbut Road, SW11



New carriageway cycle symbols with directional arrows in the centre of the running lane

Post extension required

One parking bay provided

Except cycles

Except cycles

Except cycles

Convert existing single yellow lines into double yellow lines

Remove road marking

Remove existing One Way sign and install new contra-flow signs

New cycle lane directional sign

New sign 'Except cycles'

Except cycles

New cycle lane directional sign

Cycle lane

Convert existing single yellow lines to new give way markings and double yellow lines at junction