

# GARRATT PARK PLAYGROUND CONSULTATION, PHASE 2

**Opens: Monday 8 July 2019**      **Closes: 18 August 2019**

During an initial round of consultation in summer 2018, we asked for your views about how you use the park and playground. Based on the results of the first round of consultation, three playground refurbishment designs have been developed. We would now like to hear your views to help decide on the final design for the refurbished playground.

The style and height of any new equipment has to be sympathetic to the area and it will have to be appropriate for the age range of intended use. For Garratt Park Playground the intended age range is for children aged 2 to 14 years.

## What happens next?

Once this consultation has closed, all of the feedback will be carefully considered to decide on the final design.

Whilst every attempt will be made to construct the final design to plan, certain elements may have to be altered during the implementation stage due to unforeseen technical or logistical issues.

## Have your say

The consultation will go live on **Monday 8 July 2019**.

You can access the online survey at <https://haveyoursay.citizenspace.com/wandsworthecs/garratt-park-19> from **Monday 8 July 2019**.

If you would like a paper copy, please contact us at [consult@wandsworth.gov.uk](mailto:consult@wandsworth.gov.uk) or contact the Parks Office on **020 3959 0060**.

Please be advised that the consultation closes on **Sunday 18 August 2019**.



## Garratt Park Playground Drop-in Sessions

We are holding two drop-in sessions at Garratt Park playground, SW17 0LB where you can ask us any questions you might have about the consultation:

- **Sunday 14 July 12 - 3pm**
- **Wednesday 17 July 3 - 6pm**

For updates follow us on Twitter @EnableParks

For more information contact Enable Parks: [parks@enablelc.org](mailto:parks@enablelc.org)



in partnership with

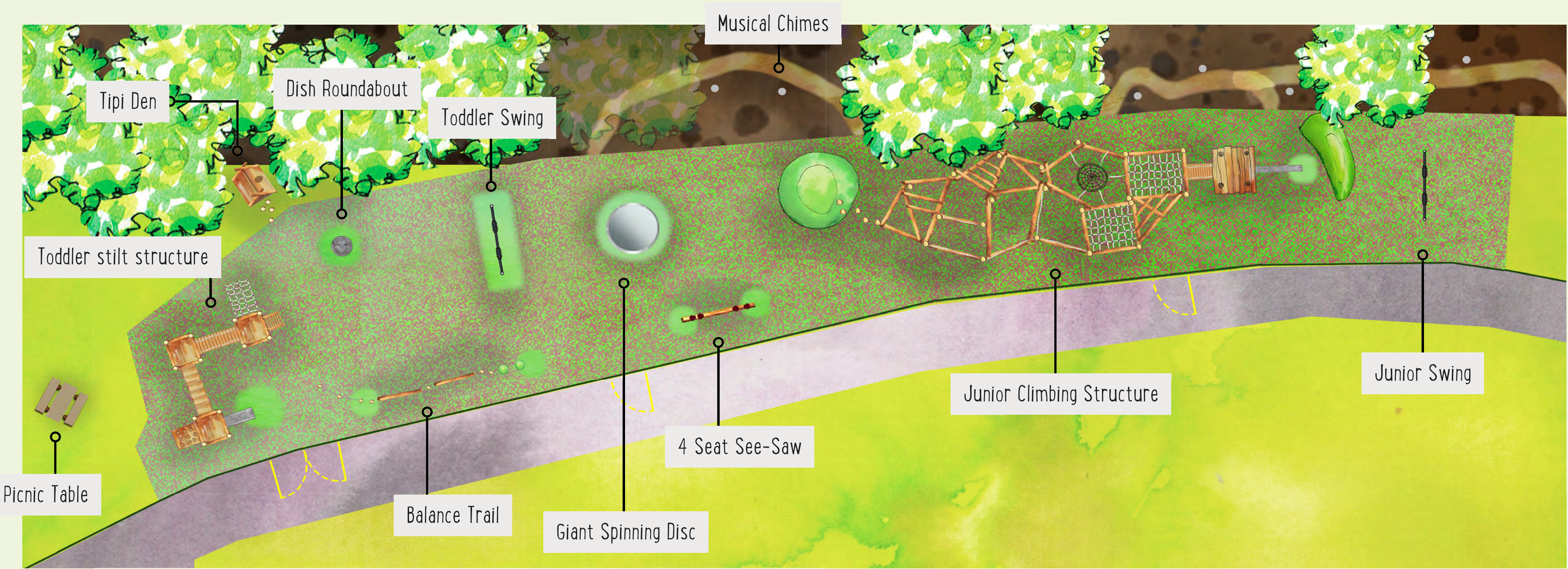
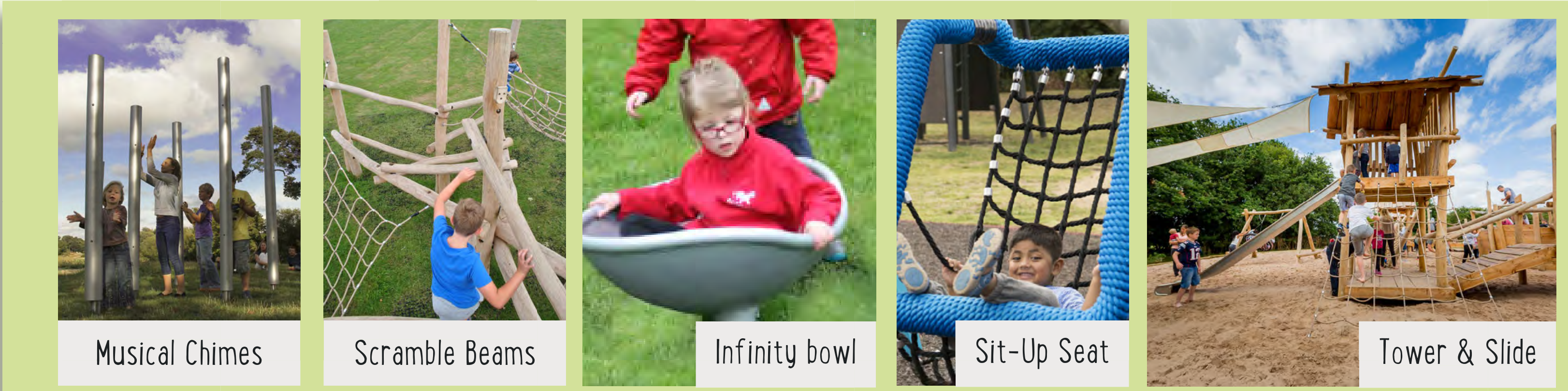
**enable**  
leisure & culture



# GARRATT PARK - DESIGN OPTION A

## Summary

Option A features a large pick up stick style natural climbing structure including a large tower and slide, clamber nets and suspended basket seat. At the southern end of the playground is a 'younger children's area' featuring a 'Sensory Stilt Village', dish roundabout, balance trail and new cradle and inclusive sit up swings. In the centre of the playspace is equipment that encourages all ages to play together. Multiple children can use the giant disk roundabout and the 4 seat see-saw simultaneously. A wood chip path winds through the trees along the western boarder featuring sensory items such as musical chimes. Recycled rubber mulch in two different shades offers safety surfacing throughout the playspace.



Grass  
\*Existing surface

Woodland  
\*Existing surface

Green Safety Surface

Brown & Green Safety Surface

N

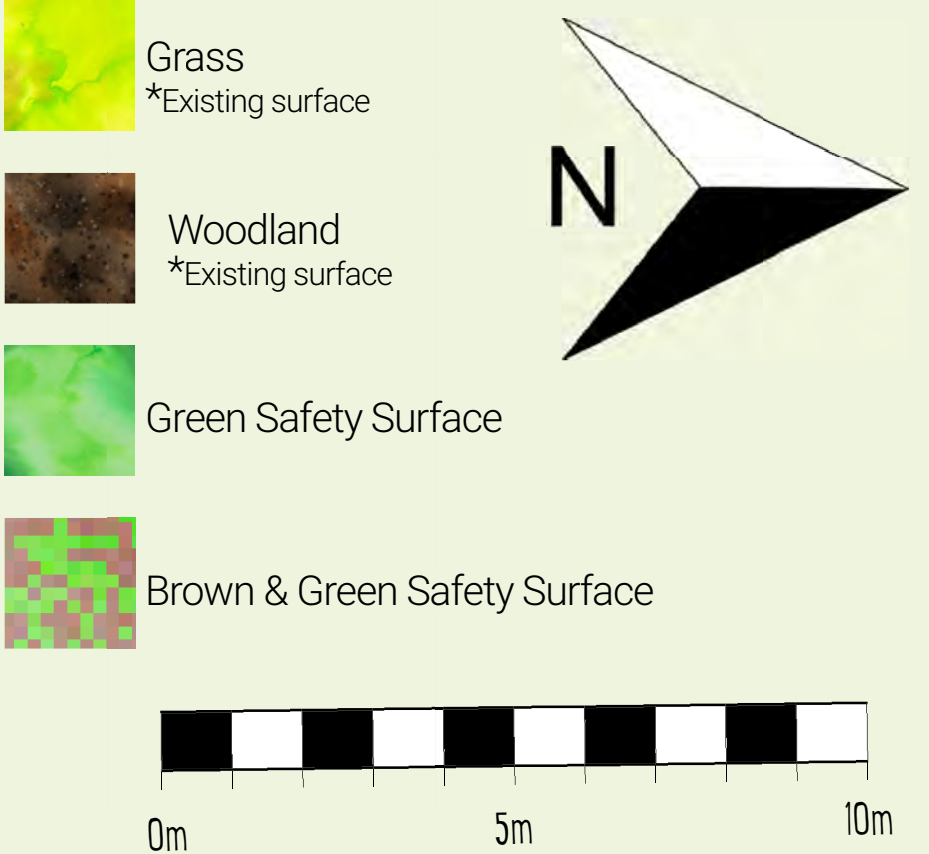
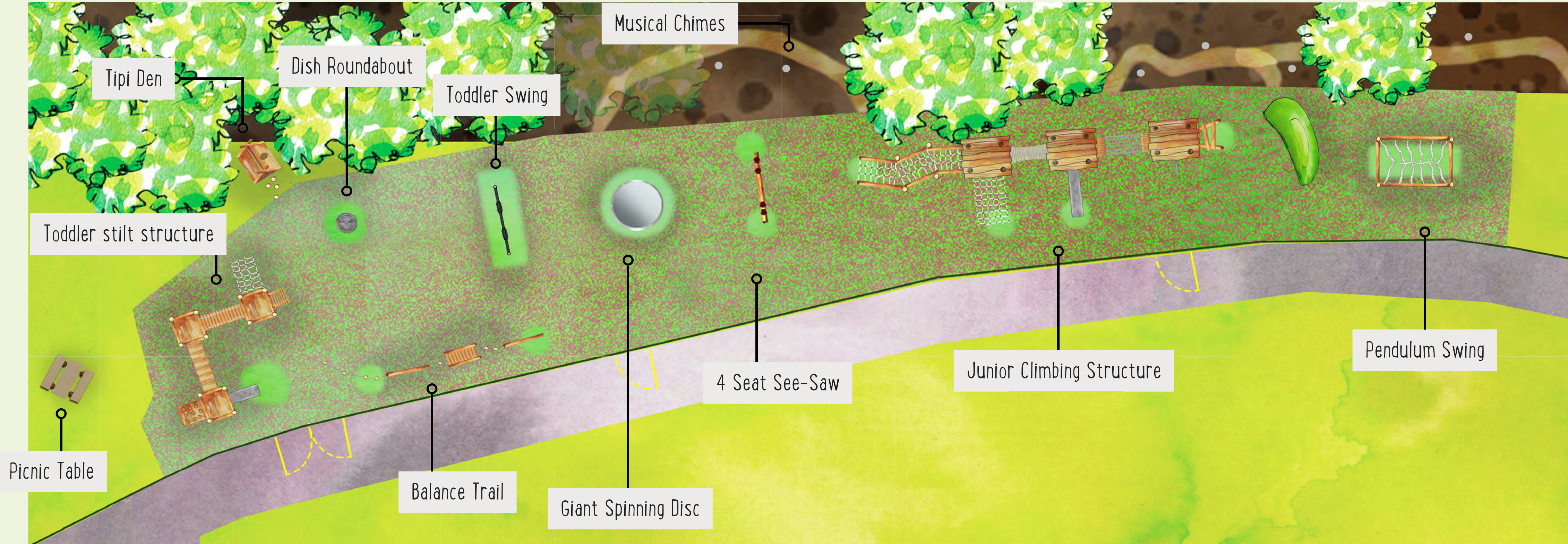
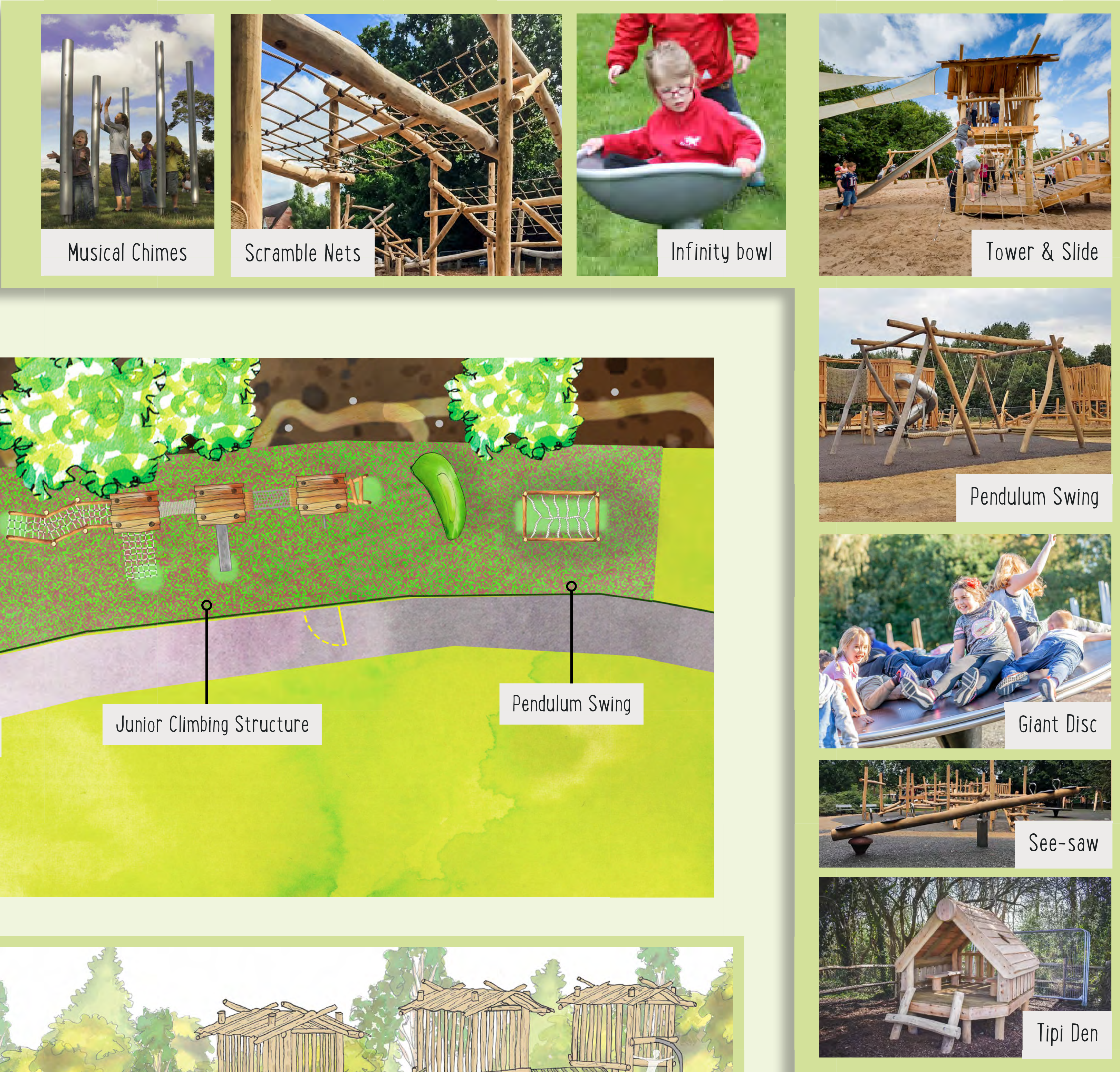
0m 5m 10m



# GARRATT PARK - DESIGN OPTION B

## Summary

Option B features a natural three tower climbing structure including scramble nets, rope bridges and slide. At the southern end of the playground is a 'younger children's area' featuring a 'Sensory Stilt Village', dish roundabout, balance trail and new cradle and inclusive sit up swings. In the centre of the area is equipment that encourages all ages to play together. Multiple children can use the giant disk roundabout and the 4 seat see-saw simultaneously. A wood chip path winds through the trees along the western boarder featuring sensory items such as musical chimes. Recycled rubber mulch in two different shades offers safety surfacing throughout the playspace.





# GARRATT PARK - DESIGN OPTION C

## Summary

Option C features a natural two tower climbing structure including scramble nets, rope bridges and slide. At the southern end of the playground is a 'younger children's area' featuring a 'Sensory Stilt Village', dish roundabout, balance trail and new cradle and inclusive sit up swings. In the centre of the area is equipment that encourages all ages to play together. Multiple children can use the giant disk roundabout, 4 seat see-saw, and junior swings simultaneously. A wood chip path winds through the trees along the western boarder featuring sensory items such as musical chimes. Recycled rubber mulch in two different shades offers safety surfacing throughout the playspace.

