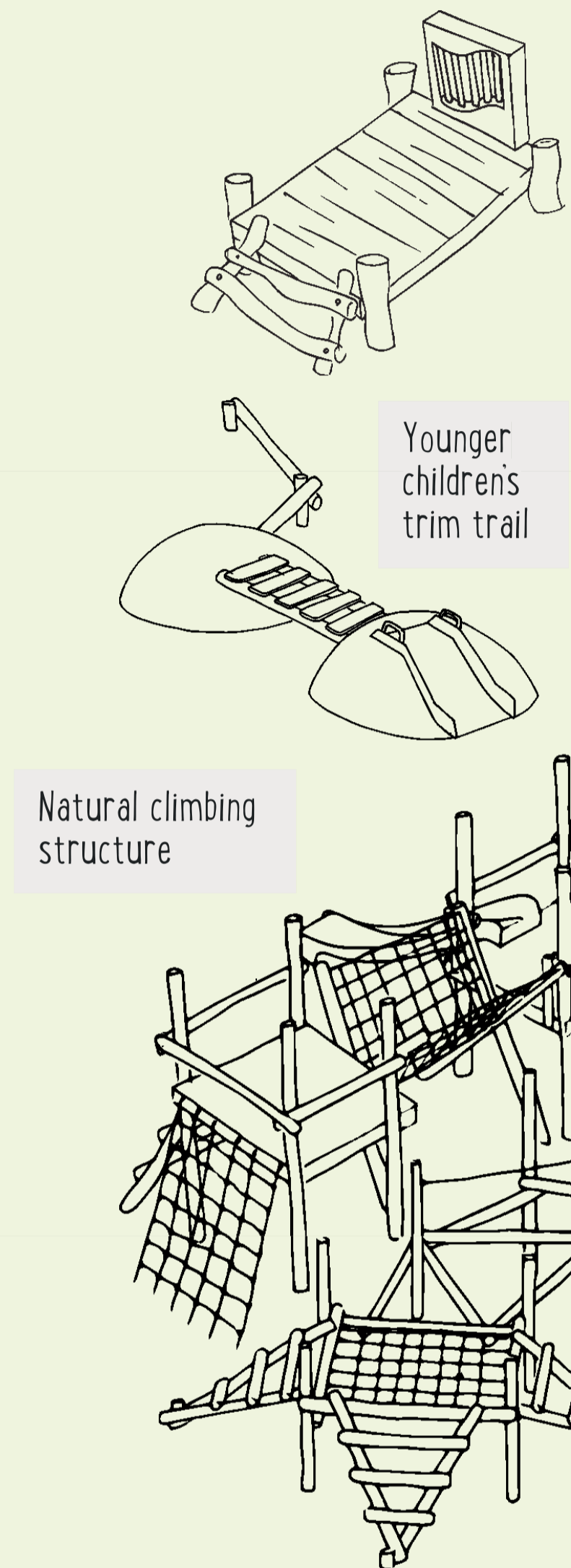


Chivalry Road Playground Consultation, Phase 2

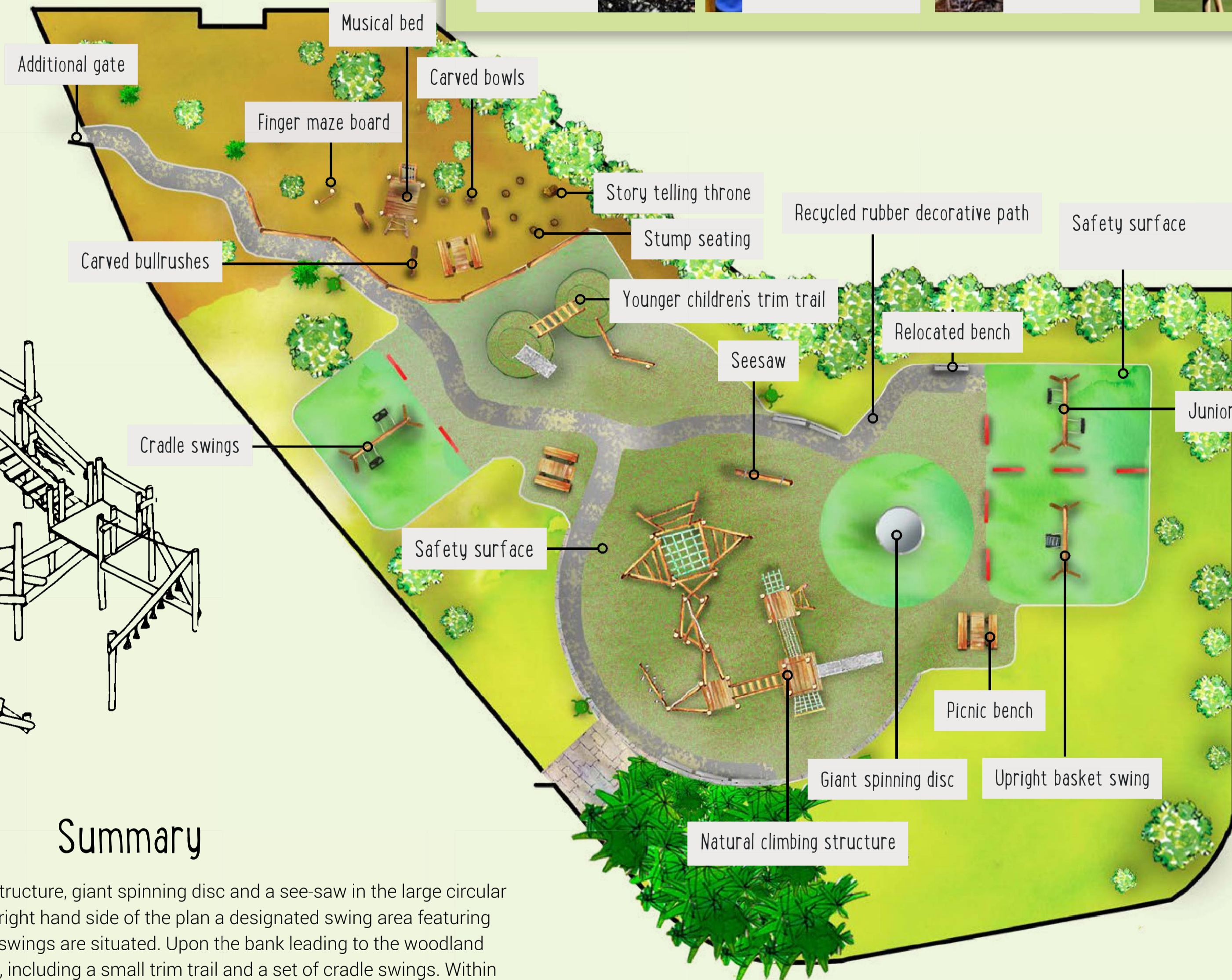
CHIVALRY ROAD - DESIGN OPTION C



Musical bed

Younger children's trim trail

Natural climbing structure

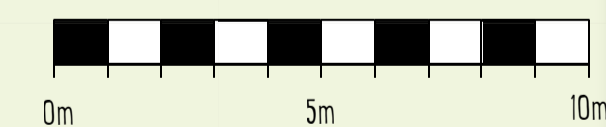


Summary

Option C features a large natural climbing structure, giant spinning disc and a see-saw in the large circular area at the centre of the play space. To the right hand side of the plan a designated swing area featuring an upright basket swing and a set of junior swings are situated. Upon the bank leading to the woodland area are several younger children's features, including a small trim trail and a set of cradle swings. Within the woodland area can be found a finger maze board, large musical bed with chimes, multiple carved bullrushes and oak bowls and a story telling circle complete with thrones and stump seating. Recycled rubber mulch in two different shades offers safety surfacing throughout the playspace whilst a decorative recycled rubber creates a path.



- Grass
*Existing surface
- Woodland
*Existing surface
- Green Safety Surface
- Green and Brown Safety Surface
- Decorative Rubber Path



Share your views by completing the online survey at <https://haveyoursay.citizenspace.com/wandsworthecs/chivalry-road-19>



in partnership with

