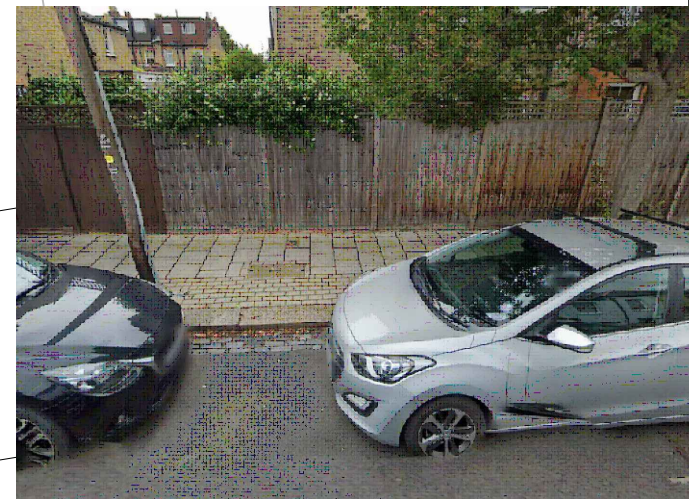


Proposed Bikehangar Location

Placed in parking bay opposite garages of 1A, between tree and pole.

Notes: Hangar to open onto the footway.



GENERAL NOTES:
 1. THIS DRAWING TO BE READ IN CONJUNCTION WITH ALL RELEVANT ENGINEERS DRAWINGS & SPECIFICATIONS.
 2. DO NOT SCALE THIS DRAWING. ALL DRAWING IN METRES.

Project Title:
Bikehangar Consultation

THIS MAP IS REPRODUCED FROM ORDNANCE SURVEY MATERIAL WITH THE PERMISSION OF ORDNANCE SURVEY ON BEHALF OF THE CONTROLLER OF HER MAJESTY'S STATIONERY OFFICE, © CROWN COPYRIGHT. UNAUTHORISED REPRODUCTION INFRINGES CROWN COPYRIGHT AND MAY LEAD TO PROSECUTION OR CIVIL PROCEEDINGS. WANDSWORTH COUNCIL LICENCE NUMBER: 100019270 (2016)

Drawing Title:
Trentham Street

		ENVIRONMENT AND COMMUNITY SERVICES DEPARTMENT	
RICHMOND AND WANDSWORTH COUNCILS			
Scale @ A4:	NTS	Drawn By:	CB
Date:	June 24	Checked By:	MT
Project No:		-	
Drawing No:		-	
Revision:		-	