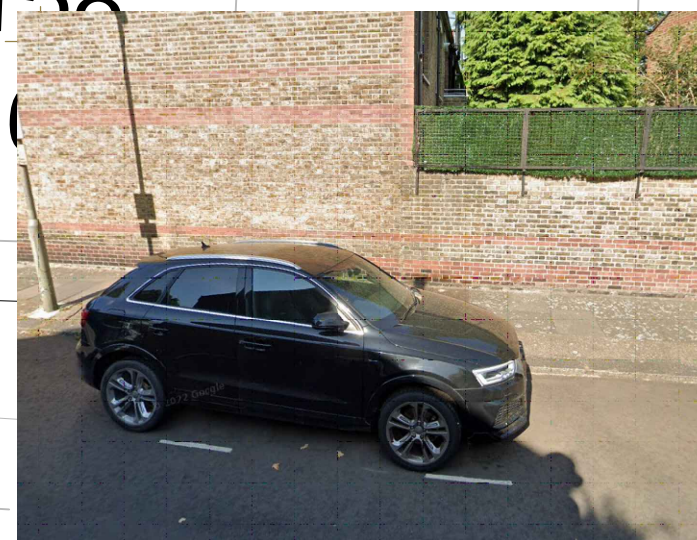
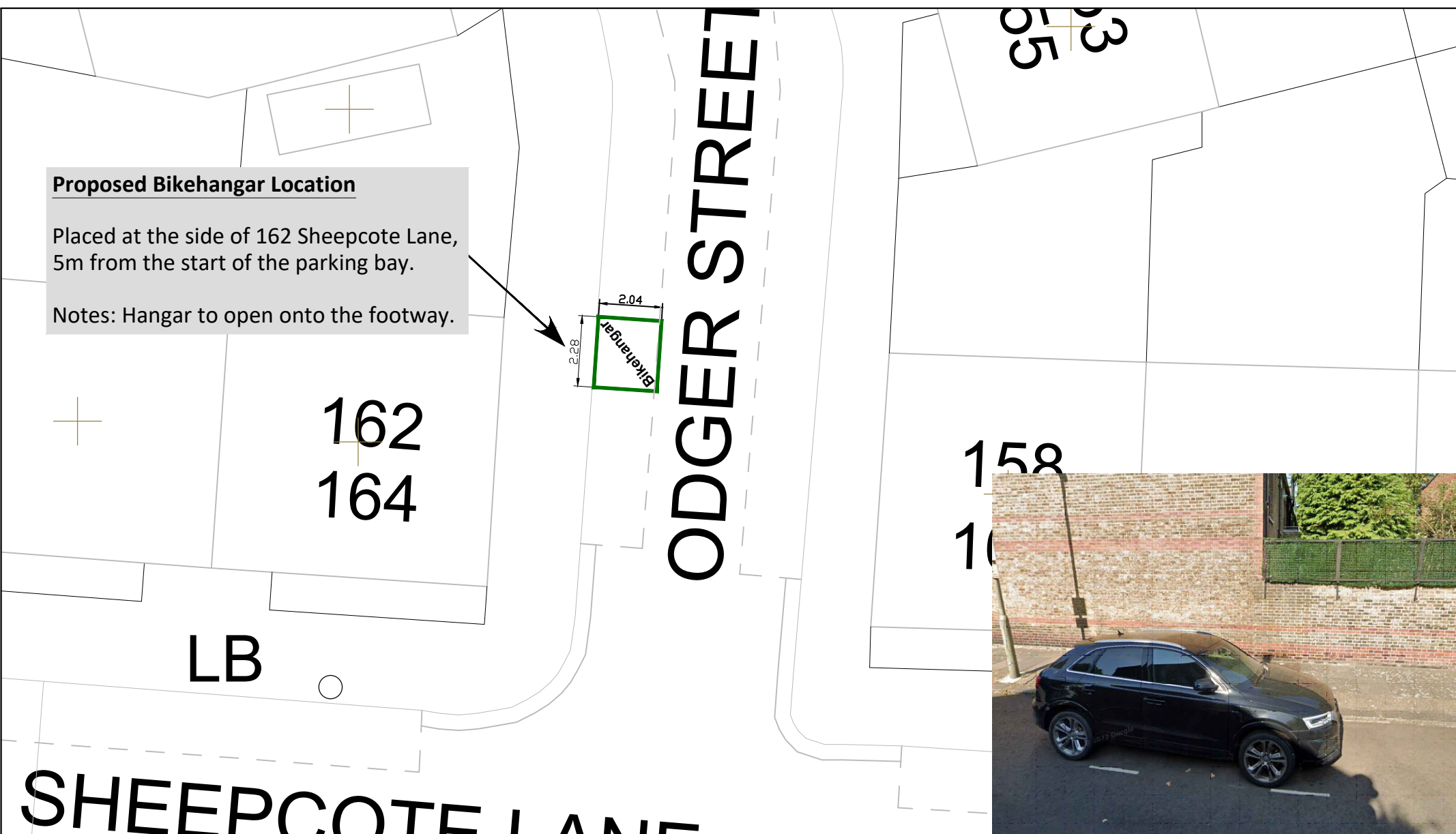


Proposed Bikehangar Location

Placed at the side of 162 Sheepcote Lane,
5m from the start of the parking bay.

Notes: Hangar to open onto the footway.



GENERAL NOTES:
 1. THIS DRAWING TO BE READ IN CONJUNCTION WITH ALL RELEVANT ENGINEERS DRAWINGS & SPECIFICATIONS.
 2. DO NOT SCALE THIS DRAWING. ALL DRAWING IN METRES.

THIS MAP IS REPRODUCED FROM ORDNANCE SURVEY MATERIAL WITH THE PERMISSION OF ORDNANCE SURVEY ON BEHALF OF THE CONTROLLER OF HER MAJESTY'S STATIONERY OFFICE, © CROWN COPYRIGHT. UNAUTHORISED REPRODUCTION INFRINGES CROWN COPYRIGHT AND MAY LEAD TO PROSECUTION OR CIVIL PROCEEDINGS. WANDSWORTH COUNCIL LICENCE NUMBER: 100019270 (2016)

Project Title: Bikehangar Consultation

Drawing Title: Odger Street

RICHMOND AND WANDSWORTH COUNCILS

Scale: A4:	NTS	Drawn By:	CB	Project No:	
Date:	May 24	Checked By:	MT		-

ENVIRONMENT AND COMMUNITY SERVICES DEPARTMENT

Drawing No:
Revision: