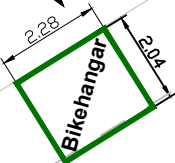


Proposed Bikehangar Location

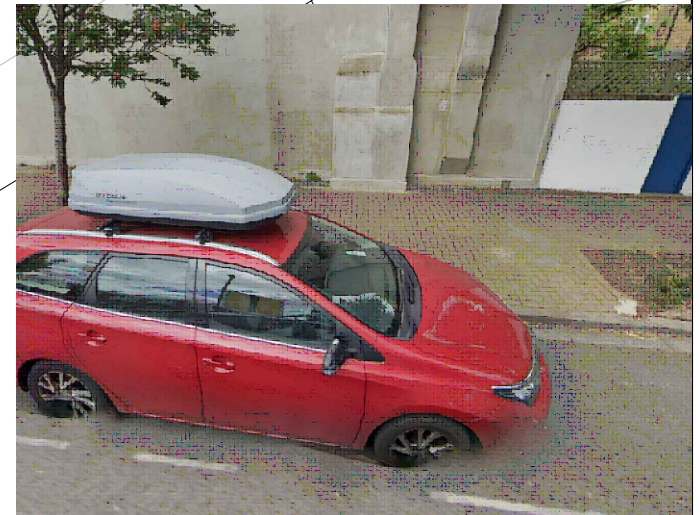
Placed at the side of 29 Juer Street, 5m from the start of the parking bay.

Notes: Hangar to open onto the footway.

29



JUER STREET



- GENERAL NOTES:**
1. THIS DRAWING TO BE READ IN CONJUNCTION WITH ALL RELEVANT ENGINEERS DRAWINGS & SPECIFICATIONS.
 2. DO NOT SCALE THIS DRAWING. ALL DRAWING IN METRES.

Project Title: Bikehangar Consultation



ENVIRONMENT AND
COMMUNITY
SERVICES DEPARTMENT

RICHMOND AND WANDSWORTH COUNCILS

THIS MAP IS REPRODUCED FROM ORDNANCE SURVEY MATERIAL WITH THE PERMISSION OF ORDNANCE SURVEY ON BEHALF OF THE CONTROLLER OF HER MAJESTY'S STATIONERY OFFICE, © CROWN COPYRIGHT. UNAUTHORISED REPRODUCTION INFRINGES CROWN COPYRIGHT AND MAY LEAD TO PROSECUTION OR CIVIL PROCEEDINGS. WANDSWORTH COUNCIL LICENCE NUMBER: 100019270 (2016)

Drawing Title: Juer Street

Scale @ A4: NTS

Drawn By: CB

Project No:

Drawing No:

Date: May 24

Checked By: MT

—

Revision: