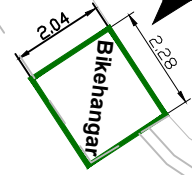


# HOPE STREET

9

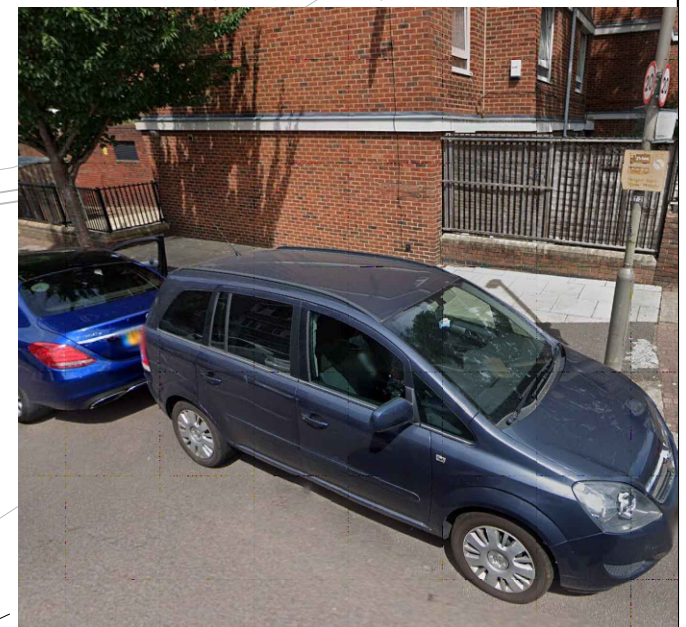


5.1m

**Proposed Bikehangar Location**

Placed in end bay on Hope Street, near junction with Maysoule Road.

Notes: Hangar to open onto the footway.





**GENERAL NOTES:**

- THIS DRAWING TO BE READ IN CONJUNCTION WITH ALL RELEVANT ENGINEERS DRAWINGS & SPECIFICATIONS.
- DO NOT SCALE THIS DRAWING. ALL DRAWING IN METRES.

THIS MAP IS REPRODUCED FROM ORDNANCE SURVEY MATERIAL WITH THE PERMISSION OF ORDNANCE SURVEY ON BEHALF OF THE CONTROLLER OF HER MAJESTY'S STATIONERY OFFICE, © CROWN COPYRIGHT. UNAUTHORISED REPRODUCTION INFRINGES CROWN COPYRIGHT AND MAY LEAD TO PROSECUTION OR CIVIL PROCEEDINGS. WANDSWORTH COUNCIL LICENCE NUMBER: 100019270 (2016)

Project Title: **Bikehangar Consultation**

Drawing Title: **Hope Street**

**RICHMOND AND WANDSWORTH COUNCILS**

Scale: A4:	NTS	Drawn By:	CB
Date:	June 24	Checked By:	MT
Project No:	-		Drawing No:
			Revision:

ENVIRONMENT AND COMMUNITY SERVICES DEPARTMENT