

Garfield Road Pocket Park - Design Objectives

Two conceptual design options for Garfield Road pocket park have been developed. The Borough would welcome your views and support in determining the preferred option and commenting upon the way forward with these proposals.

Garfield Road Park presents an opportunity to improve a local park for residents and visitors to Twickenham town centre. The existing space is in need of improvement to achieve the following:

- A high quality space connected to Twickenham Library and the civic centre of Twickenham;
- Improve connectivity and access along side streets;

- Create an outdoor space, as part of a series of spaces around the town centre;
- Improve natural surveillance through the space;
- Offer an alternative route from London Road and Twickenham Station to York Street;
- Improve the space for residents and local the working community;
- Offer a potential location for a kiosk or café; and
- Incorporate public art or feature into the design, potentially linking this to literary inspiration of the nearby Twickenham Library.

Existing Issues and Opportunities



Opportunity to improve connections and natural surveillance of Garfield Road Pocket Park



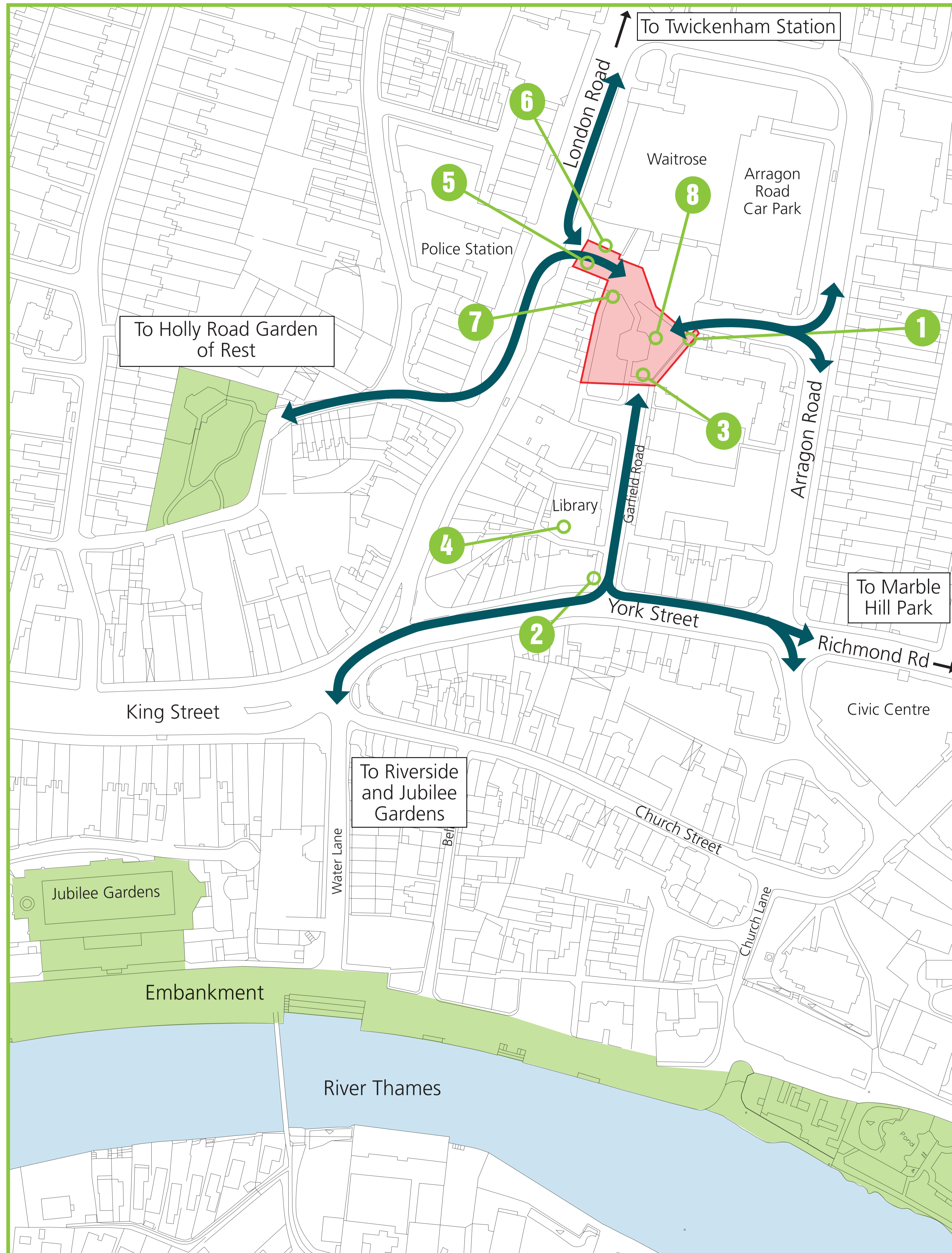
Potential to improve views to the park space from York Street



Remove parking in front of the park, at the end of Garfield Road. Reduce extents of retaining walls to increase the openness of the space and improve accessibility



Twickenham Library could be better connected to the park allowing use as an outdoor class room/reading room



Potential to improve visibility and connectivity with London Road



There is potential to extend the materials and concepts within the park space into Katharine Road



There is scope to reduce redundant and superfluous street furniture



Opportunity to improve seating arrangement within the park

Twickenham Town Centre | Garfield Road Open Space

Option 1 - Carnegie Circus

Objectives

- Create clear, legible space, removing unnecessary level changes and clutter.
- Improve visibility and safety.
- Introduce more light and feeling of space with fewer trees.
- Create a pocket park associated with Twickenham Library.
- Strengthen connections with Garfield Road and, in particular, the historic library.
- A structured and simple 'Circus', which links Katharine Road and Garfield Road.

Design Elements

- 1 A feature wall that offers the potential as a public art feature; a spectacular focal point and a visible reference point from both Katharine Road and Garfield Road.
- 2 A flexible space that uses retaining walls as informal seating.
- 3 A 'Circus' that has flexibility to allow for the installation of public art and facilitate future community uses or a café kiosk, as a centrepiece. Paving design to central circus could be a bespoke design with script etched into paving or lighting inlaid into the ground.
- 4 Clear uninterrupted connection to library along Garfield Road creating both a strong visual and physical connection.
- 5 An outdoor reading room that can be used by the library for public reading sessions or by schools.

Materials

- 6 Large-scale granite flags of five different colours laid out randomly.
- 7 Silver grey granite cladding to seating walls with granite retaining walls.
- 8 Timber slatted seating for outdoor reading room.
- 9 Lighting will include pole lighting and uplighting to existing and new trees.
- 10 Planting to raised bed and to define the edges of the park.

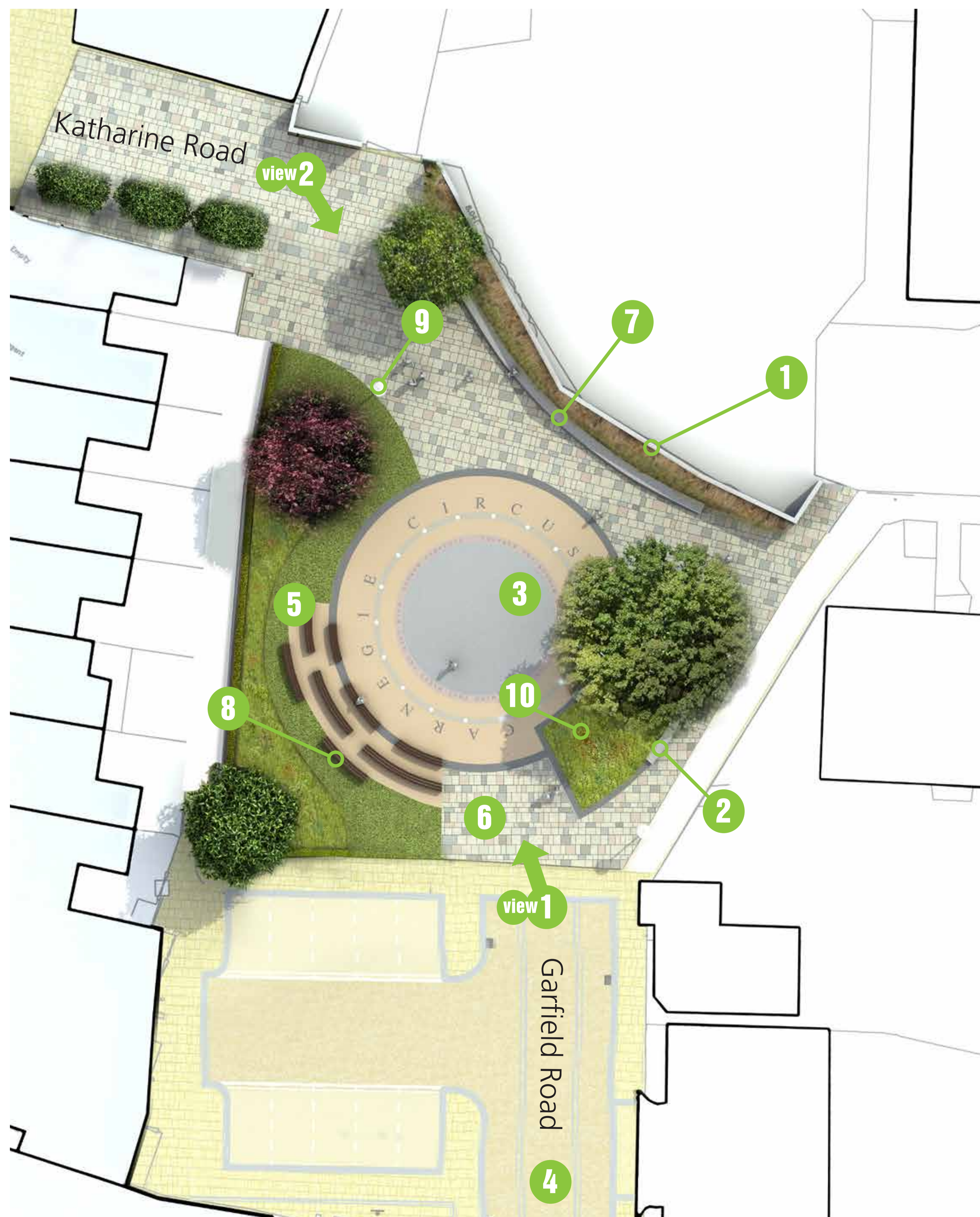
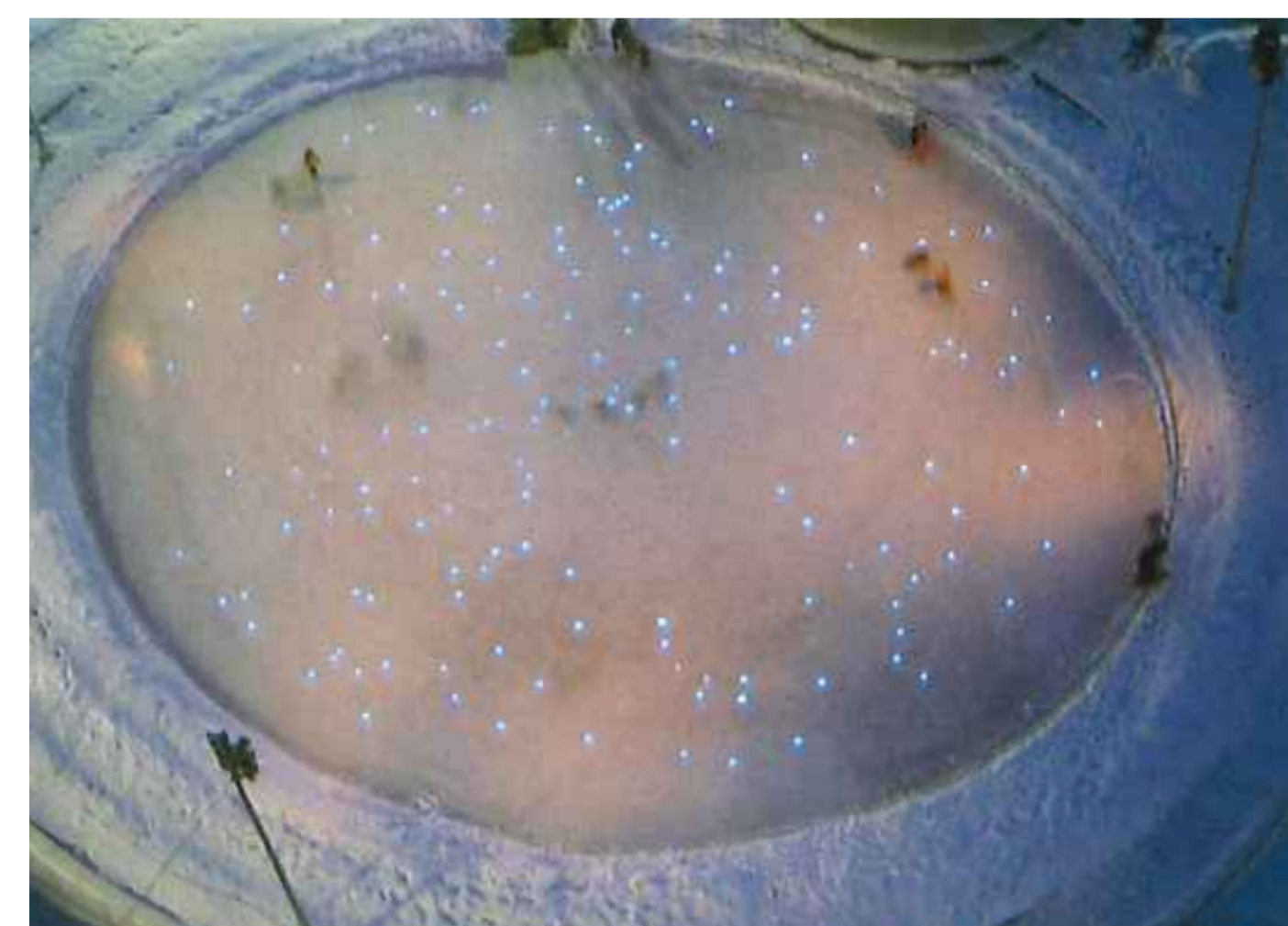
Granite Setts / Paving – Five Colour Mix

Granite Setts Five Colour Mix Percentages:

- 40% Buff
- 40% Silver Grey
- 7% Black
- 7% Grey Blue
- 6% Pink



Design Elements



Twickenham Town Centre | Garfield Road Open Space

Option 2 - Carnegie Gardens

Objectives

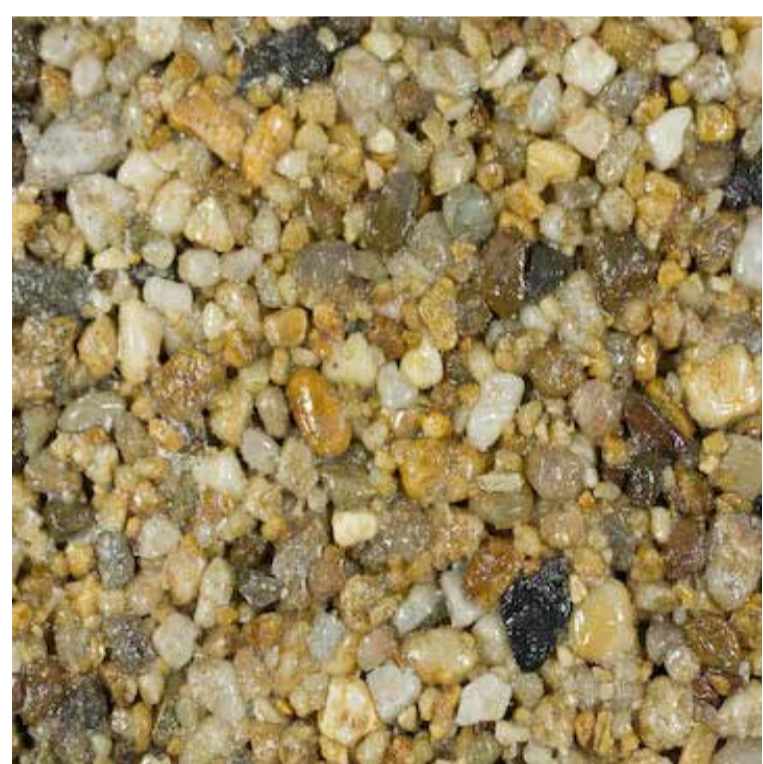
- Create clear, legible space, removing unnecessary level changes and clutter.
- Improve visibility and safety with defined routes through and retaining a green centre to the park.
- Introduce more light and feeling of space with fewer trees.
- Create an organic pocket park with its own identity with public art as a theme throughout.
- Strengthen connections with Katharine Road and Garfield Road.

Design Elements

- 1 A feature wall that offers the potential as a public art feature; a spectacular focal point and a visible reference point from both Katharine Road and Garfield Road.
- 2 An organic and fluid space that merges with Garfield Road thus unifying street and open space.
- 3 Colourful layers of planting flowing through the park.

Materials

- 4 Large-scale granite flags of five different colours laid out randomly.
- 5 Resin bonded gravel finish or similar.
- 6 Bespoke seating with stone coping with stone coursed walls that flow through the space.
- 7 Lighting will include pole lighting, uplighting to trees and spot lighting inlaid into the ground that follows curves of the scheme.



Resin bonded gravel

Granite Setts / Paving – Five Colour Mix

Granite Setts Five Colour Mix Percentages:

- 40% Buff
- 40% Silver Grey
- 7% Black
- 7% Grey Blue
- 6% Pink



Design Elements

