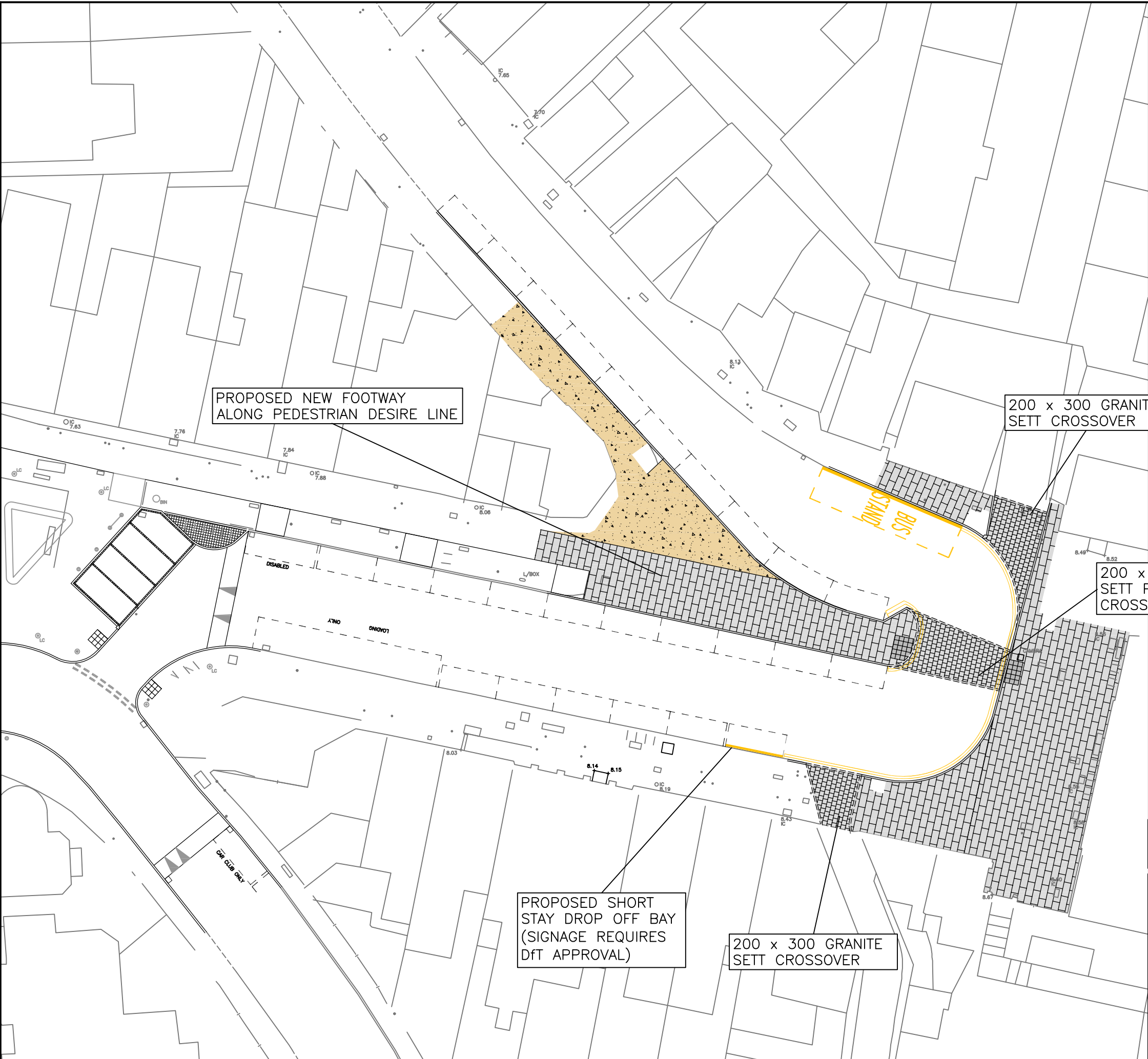



"This map is reproduced from Ordnance Survey material with the permission of the Controller of Her Majesty's Stationery Office © Crown copyright. Unauthorised reproduction infringes Crown copyright and may lead to prosecution or civil proceedings 100019441 [2016]."



APPENDIX A

REVISION	AMENDMENT	DRAWN BY AND DATE	DESIGNED BY AND DATE	CHECKED BY AND DATE	APPROVED BY AND DATE
 <i>LONDON BOROUGH OF RICHMOND UPON THAMES</i>			DRAFT	SCALE (AT A3 SIZE)	
			ISSUE	<input checked="" type="checkbox"/>	NTS
CLIENT	LONDON BOROUGH OF RICHMOND UPON THAMES				
PROJECT	KEW GARDENS STATION – PEDESTRIAN ACCESSABILITY				
DRAWING TITLE	CONSULTATION AMMENDMENTS				
ISSUING OFFICE	TWICKENHAM		DRAWING NUMBER		REVISION
TELEPHONE	020 88911411		2343-CS-GL-002		