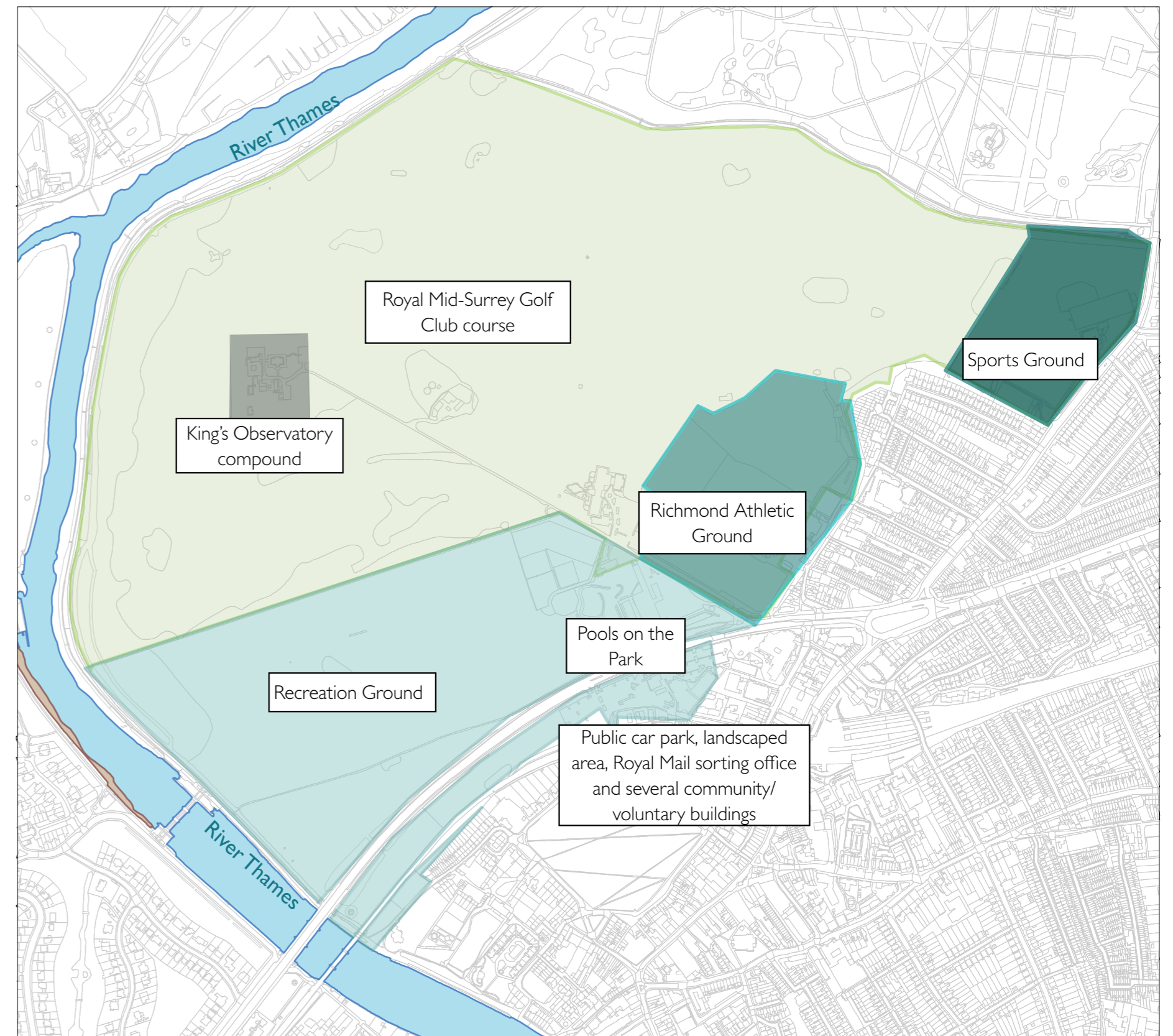


OLD DEER PARK

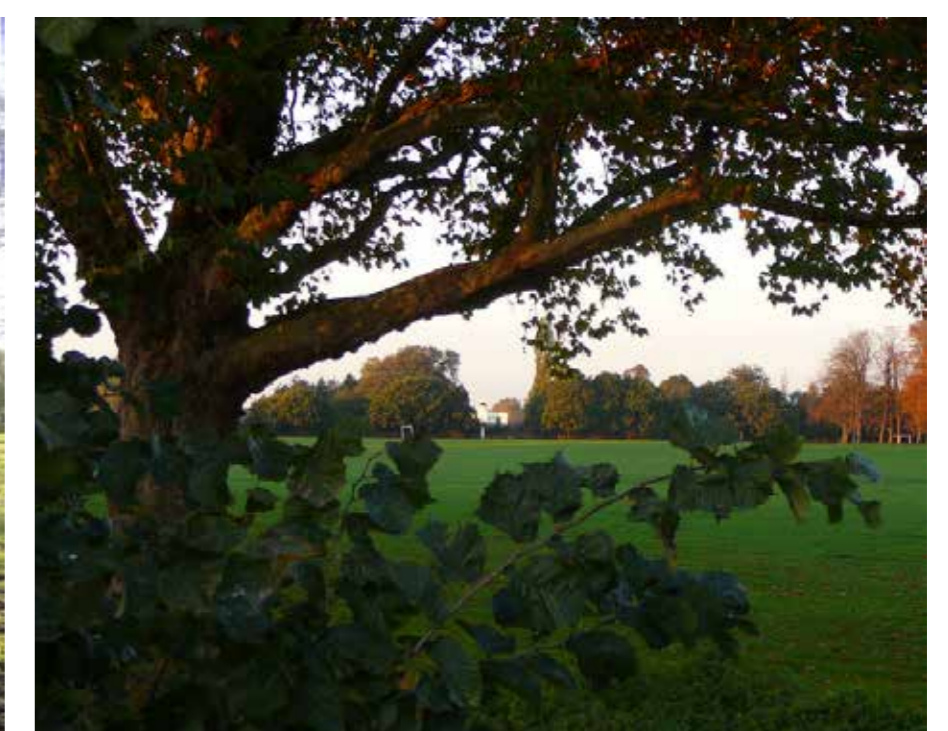
Old Deer Park (ODP) is a Grade I listed area on the register of Historic Parks and Gardens, established during the reign of Henry VI. The Park itself forms the core of the Old Deer Park Conservation Area, bound to the south by Richmond, west by the Thames and to the north by Kew Gardens.

The area is extensive, 147 hectares in total, with a varied character ranging from open space and natural landscape supported by many mature trees, through to car parking, sports facilities and community buildings. Much of the land remains in the ownership of the Crown Estate, who we are engaging with, along with the various leaseholders operating in the Park. The Park's main function is for recreation and includes the following, accessed from the A316:

- Recreation Ground, with open recreation areas, sports pitches and tennis courts;
- King's Observatory compound, housing a Grade I listed building;
- Royal Mid-Surrey Golf Club course;
- Richmond Athletic Ground (including Grade II listed pavilion), which is home to Richmond and London Scottish Rugby Football Clubs;
- Richmond Swimming Pool (Grade II listed building) & Lido, now called 'Pools on the Park';
- Public car park, landscaped area, Royal Mail sorting office and several community/ voluntary buildings; and
- Accessed from the A307 (Kew Road) the Sports Ground with rugby (London Welsh), cricket and tennis.



Old Deer Park signage



View towards King's Observatory

Why is a Supplementary Planning Document (SPD) needed for Old Deer Park?

The importance of the Park as a natural and community resource requires the creation of a specific framework for decision making on any future change and development. Developed alongside the Richmond, St Margarets and East Twickenham SPD's, it will ensure that key features within the area are protected and that any future development is appropriate, including:

- Maintaining protected views including the view from the King's Observatory, which is a critical landmark for the Park;
- Protecting the array of Grade I & II listed buildings within the Park; and
- Ensuring openness and recreational space is protected and enhanced.

It is of prime importance that the SPD assesses the Park as a whole, as opposed to a series of parcels with different uses. However, the south east perimeter sports facilities, as well as opportunities over the A316 including the car parks, community buildings and Royal Mail sorting office will be looked at in particular, as will the treatment of routes and connections to the park, town centre and other green spaces.

The draft Site Allocations Plan (see plan below) outlines two designations within ODP:

- 'RI 1 Pools in the Park' proposes the 'Intensification of sports use'; and
- 'RI 4 Richmond Athletics Ground' which seeks to 'Retain as sports ground and upgrade stands'.

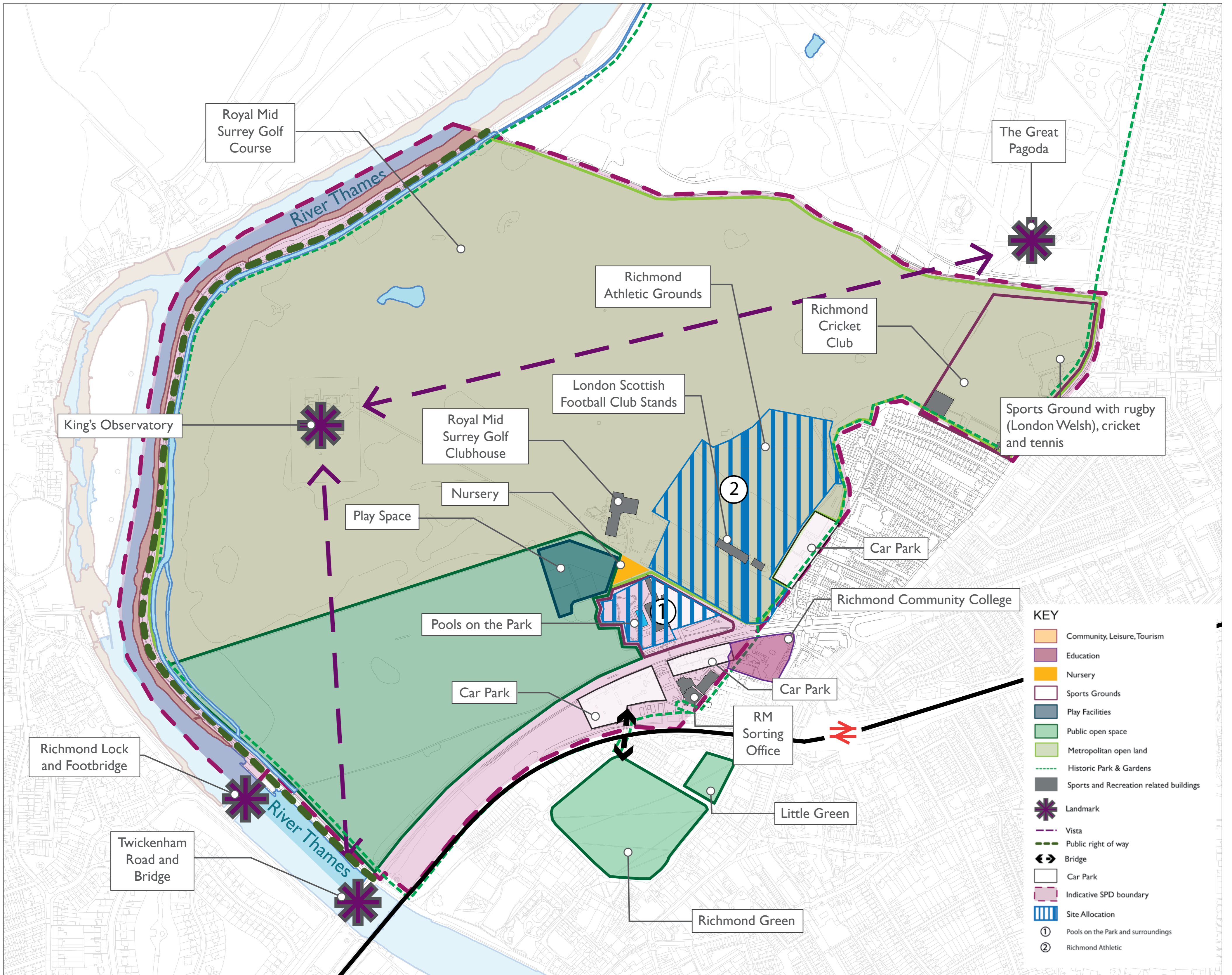
The development of this specific SPD for Old Deer Park will help to ensure that any prospective developments on these sites are sensitive to the historic attributes of the Park whilst supporting the important recreational/sporting activities within the Park.

How do I get involved?

The Council is keen to hear your views about the Park including, how it is used, what aspects of it are important to you, what opportunities you think there are for improving the Park, the access to it, and increasing the use of it.

Please complete a questionnaire to let us know your views.

Old Deer Park



The plan above includes the location of key features within the park and the draft allocation sites



Golf clubhouse



Recreation area



Play area



Richmond Athletic Ground



Recreation Ground sports pitches



Pools on the Park