

Richmond Upon Thames College – Introduction

Richmond Upon Thames College has a dated historic site with a considerable amount of planned maintenance liabilities. The accommodation is not fit for purpose and does not provide a modern, real work environment for students. The College is significantly over spaced and requires a reduction to create a more efficient estate.

This project proposed is for the creation of an outstanding new campus for education, skills and enterprise co-locating a completely a new further education facility alongside a new free school, a special needs school and a 'technology hub' operated by a global media company. The College will be delivered in two phases including e-enabled spaces for business innovation linked to high priority vocational learning centres in key areas such as digital media, IT, retail, finance, hospitality, creative, health and wellbeing. The project delivers significant financial and qualitative benefits ensuring learners secure skills to progress into sustainable employment opportunities.

This consultation is to support the submission of the reserved matters application for the phase 1 college building.



College site within London



Location of college site



Aerial view of existing college



Existing college buildings



Existing college site plan



Proposed masterplan design

*Proposals are subject to change following feedback from pre-application engagement with the Local Planning Authority and public consultation exercise.

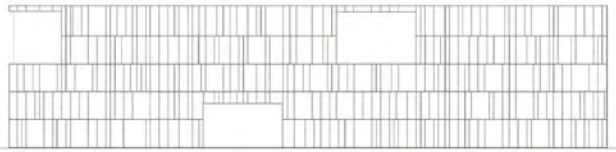
Architectural Elevations

The fabric of the building has been designed as a solid mass through which penetrations are made with reveals in the cladding. Solar shading profiles act as an overarching element in the elevation treatment, positioned on the plane of the cladding, this horizontal element ties together the rainscreen cladding and areas of glazing.

Larger "punches" in the building envelope emphasise key building elements, such as entrances and large open teaching. These recesses are further expressed through the introduction of bronze metal, the warmer tones

complement the anodised aluminium external treatment and lighting. Particularly at the entrance, this will feel welcoming for both pupils and visitors.

In contrast to recessing the façade, full height glazing to the level 04 restaurant is projected from the cladding plane. This protruding box emphasises the internal function of the college and is simply detailed and framed in bronze, advertising this publicly accessible service.



Cladding



Windows



Solar Shading

*Proposals are subject to change following feedback from pre-application engagement with the Local Planning Authority and public consultation exercise.



West Elevation



South Elevation



Looking across plaza towards main pupil entrance at dusk



North Elevation

Material Palette

The material palette has been designed to enhance the architectural form of the college and to respond appropriately to its local surroundings.

Through the evolution of design we have explored the use of alternative materials as an approach to:

- Complement existing materials
- Help to 'break-up' the elevation
- Reduce perceived building mass



1 - Anodised Aluminium Rainscreen Cladding and Solar Shading - Neutral finish - ETEM or KME system



2 - Anodised Aluminium Rainscreen Cladding - Bronze Finish - ETEM or KME system to selected areas



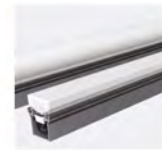
3 - PPC aluminium curtain walling, external windows and doors - Grey



4 - SGG Cool-Lite glazing to windows and curtain walling



5 - Terracotta baguettes as plant screening



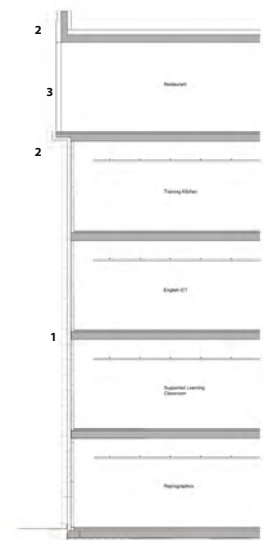
6 - Vertical facade strip lighting



North elevation of college as seen from A316



Elevational & Sectional Study of Proposed Materials



East Elevation

*Proposals are subject to change following feedback from pre-application engagement with the Local Planning Authority and public consultation exercise.



Ground Floor

Design Concept

The key element of the design is the Atrium around which the majority of teaching and staff accommodation wraps, internal balconies function as circulation around the atrium and overlook the space. Double height entrances punch through the accommodation at ground level and slowly reveal the atrium space as you enter.

Within the Atrium, there are two key components: boxes and platforms. The boxes contain the main auditorium and dark studios spaces, on top of which sits stepped platforms comprising of social spaces and learning resources. Above the atrium, rooflights provide natural daylight and respond to the external treatment.

*Proposals are subject to change following feedback from pre-application engagement with the Local Planning Authority and public consultation exercise.



Fourth Floor



Third Floor



Second Floor



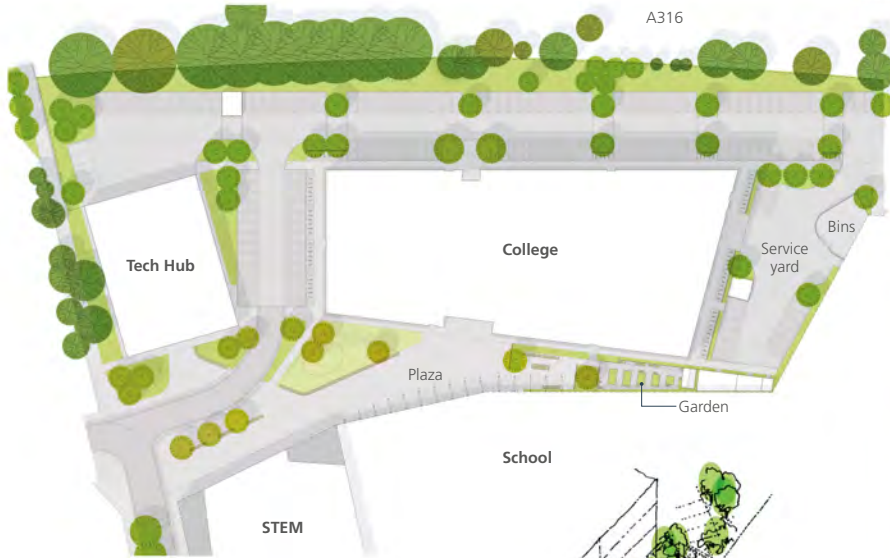
First Floor



Internal view from the atrium looking up towards the Learning Resource Centre



Internal view from lobby looking into the atrium



College site plan

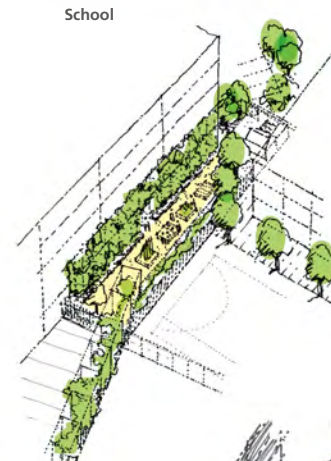


Aerial view of college within landscape

Site Wide Principles

The college landscape follows the masterplan principles for the Richmond Education & Enterprise Campus, consisting of;

- **Distinct Identities & Access**
Creation of a series of legible places within the campus, each with their own distinct visual identities
- **Cohesive Whole, Shared Access**
Maintain a cohesive, unified feel across the campus
- **Vibrant & Characterful**
Areas set out on a landscape garden principle to create safe & comfortable environments
- **Managed Boundary, Clear Interior**
Supervision and secure boundaries are key



College garden



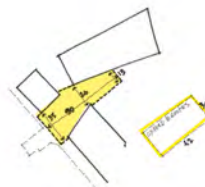
College entrance plaza

Plaza and Garden

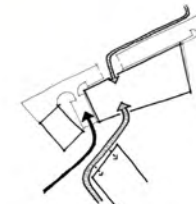
The plaza to the college is the main arrival space, its heart. It is the key space for orienting visitors to the college, containing signage and cycle parking. It is also a key public space for meeting, sitting out in the sun, and connects the main college building to the STEM and sports hall.

The college garden is a quiet, contemplative space for sitting out, and a protected space for growing and learning.

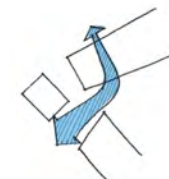
Plaza design principles



Scale
Principle gathering space
Meeting of disciplines
60/40 Hard & Soft



Routes
Distinct pedestrian / vehicle approaches
Primary student route from south

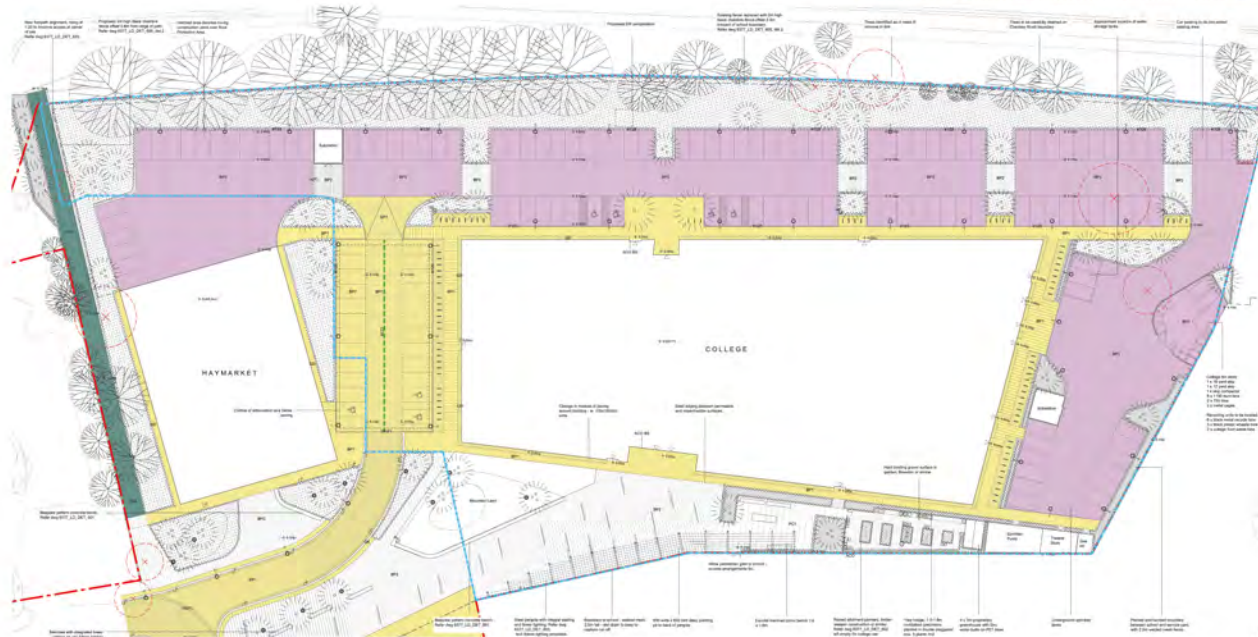


Floorscape
Internal - external flow
Distinctive
Multi-use



Surface
Consistent material
Pattern / texture
Soft landscape channelling approaches

*Proposals are subject to change following feedback from pre-application engagement with the Local Planning Authority and public consultation exercise.



College, Parking, & Plaza General Arrangement



Aerial view of parking to north of College



Pedestrian Access

The primary pedestrian access point to the College will be via an entrance plaza located on the south side of the College Main building. It is envisaged that the primary pedestrian route to the plaza will be via Marsh Farm Lane along the western boundary. Some students will still choose to approach the site from other directions, through the Heatham Estate, or from along the A316.

●●●● Pedestrian Access

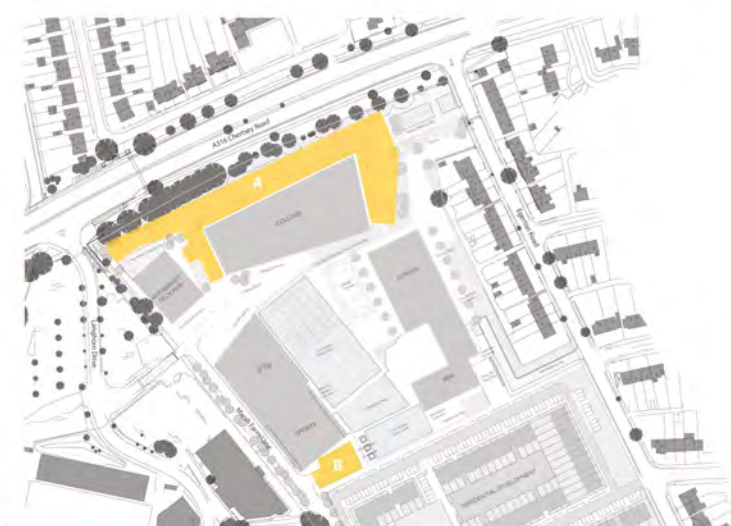
*Proposals are subject to change following feedback from pre-application engagement with the Local Planning Authority and public consultation exercise.



Vehicle Access

Vehicular access to the College will be primarily off of the A316 (Chertsey Road), via Langhorn Drive. This will provide access to the College Main building and STEM Facility, as well as the principle car parking areas for the College, including accessible and visitor car parking. The primary egress from these car parks should be via Langhorn Drive but with a secondary egress via the upper part of Egerton Road.

— Vehicular Access
- - - Vehicular Exit
●●●● Service Access
- - - Service Exit
- - - Maintenance Access



Parking

The majority of College parking (A) is located adjacent to the A316 and incorporated into the external landscaping. A number of spaces are also positioned outside the Sports Centre (B) to provide remote parking for staff during the day and community parking out-of-hours. Overall, 150 parking spaces are provided on site, of which 8 are accessible bays, 8 are visitor bays and 1 is suitably sized for a mini-bus.

A service area and delivery drop off point is located to the north east of the site. This will provide service access to the Free School to the north and the College to the east.



Temporary Sporting Provision



Final Sporting Layout



Sports pitches in relation to College