

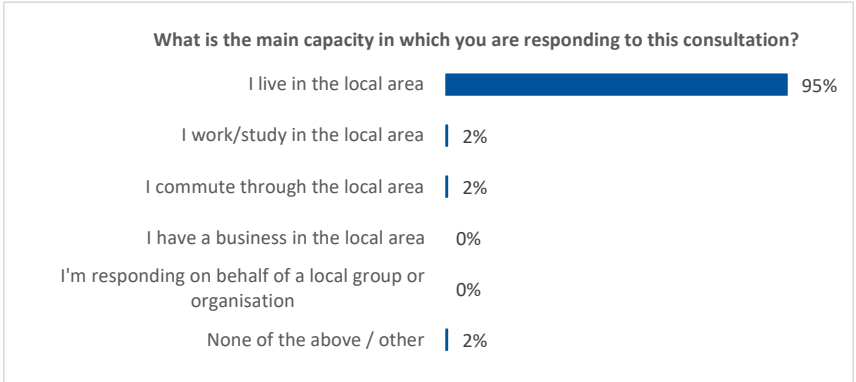
Dean Road Open Space – Community Food Growing 2024

There were 60 responses in total to this consultation.

Question 1

What is the main capacity in which you are responding to this consultation?

Response	Number of respondents	Percentage of all respondents
TOTAL NUMBER OF RESPONDENTS ANSWERING THIS QUESTION		
I live in the local area	57	95%
I work/study in the local area	1	2%
I commute through the local area	1	2%
I have a business in the local area	0	0%
I'm responding on behalf of a local group or organisation	0	0%
None of the above / other	1	2%



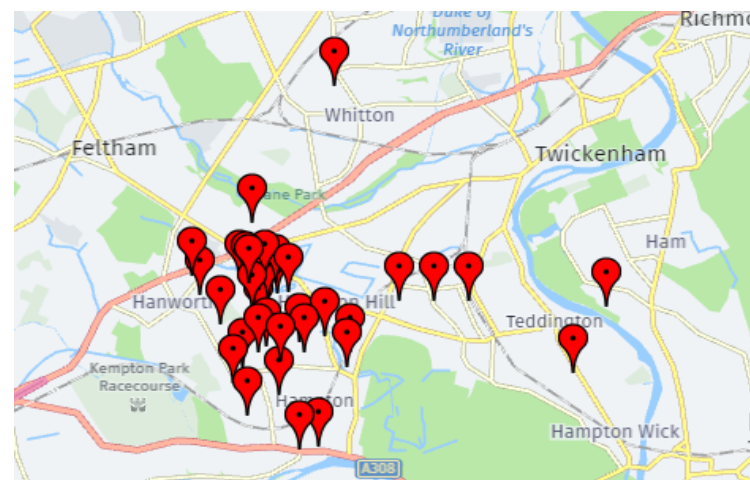
Question 2

Please tell us your postcode:

TOTAL NUMBER OF RESPONDENTS ANSWERING THIS QUESTION	60
--	----

See tab called "postcodes" for full list of postcodes

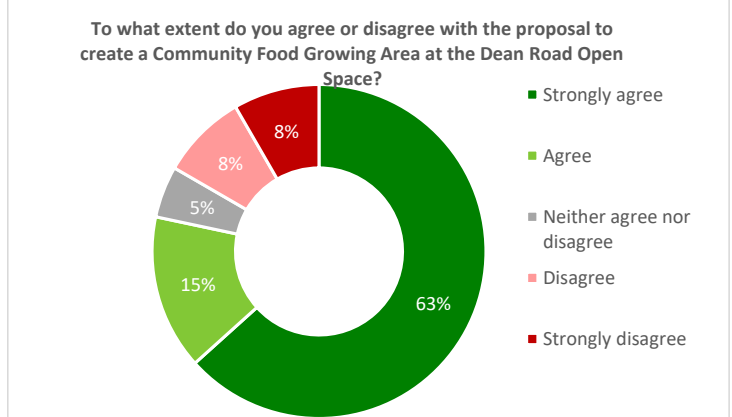
The map below shows the distribution of postcodes



Question 3

To what extent do you agree or disagree with the proposal to create a Community Food Growing Area at the Dean Road Open Space?

Response	Number of respondents	Percentage of all respondents
TOTAL NUMBER OF RESPONDENTS ANSWERING THIS QUESTION		
Strongly agree	38	63%
Agree	9	15%
Neither agree nor disagree	3	5%
Disagree	5	8%
Strongly disagree	5	8%



Question 3 - If you disagree or strongly disagree, please tell us why below:

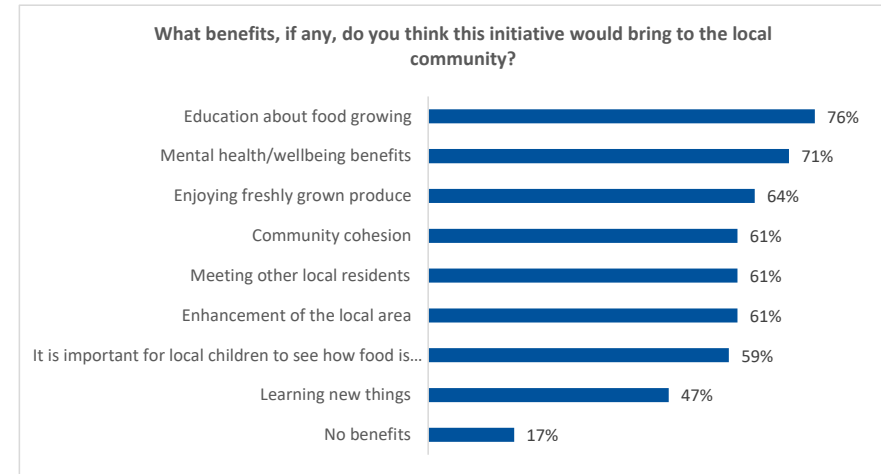
Open response (free text) question	Number of respondents

TOTAL NUMBER OF RESPONDENTS ANSWERING THIS QUESTION	20
---	----

Question 4

What benefits, if any, do you think this initiative would bring to the local community?
NB Respondents were able to select more than one option, so percentages add up to more than 100.

Response	Number of respondents	Percentage of all respondents
TOTAL NUMBER OF RESPONDENTS ANSWERING THIS QUESTION	59	
Education about food growing	45	76%
Mental health/wellbeing benefits	42	71%
Enjoying freshly grown produce	38	64%
Community cohesion	36	61%
Meeting other local residents	36	61%
Enhancement of the local area	36	61%
It is important for local children to see how food is grown	35	59%
Learning new things	28	47%
No benefits	10	17%



Question 4 (please specify below):

Open response (free text) question	Number of respondents
TOTAL NUMBER OF RESPONDENTS ANSWERING THIS QUESTION	9

Question 5

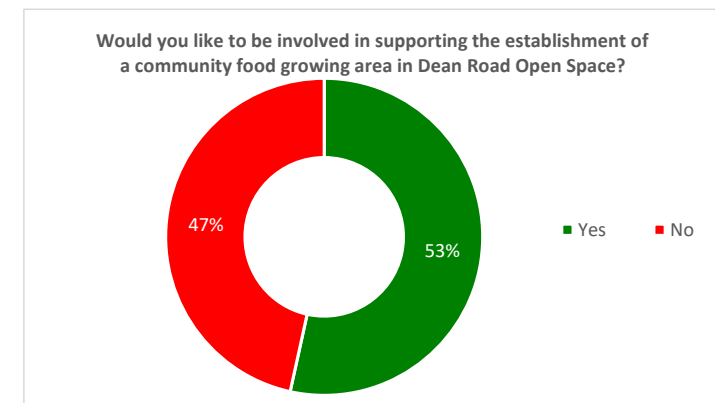
Please use the space below if you would like to make any further comments on the proposal:

Open response (free text) question	Number of respondents
TOTAL NUMBER OF RESPONDENTS ANSWERING THIS QUESTION	33

Question 6

Would you like to be involved in supporting the establishment of a community food growing area in Dean Road Open Space?

Response	Number of respondents	Percentage of all respondents
TOTAL NUMBER OF RESPONDENTS ANSWERING THIS QUESTION	58	100%
Yes	31	53%
No	27	47%



Question 6 - email address list

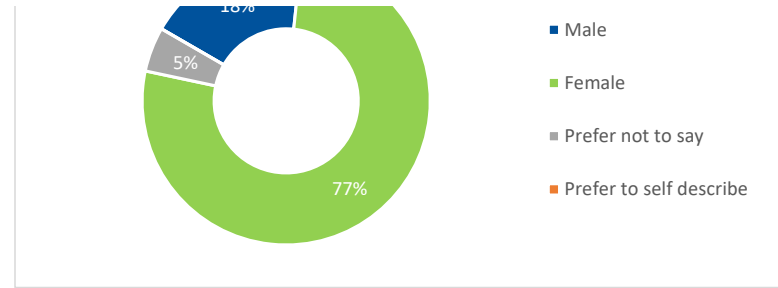
Open response (free text) question	Number of
TOTAL NUMBER OF RESPONDENTS ANSWERING THIS QUESTION	31

RESPONDENT PROFILE

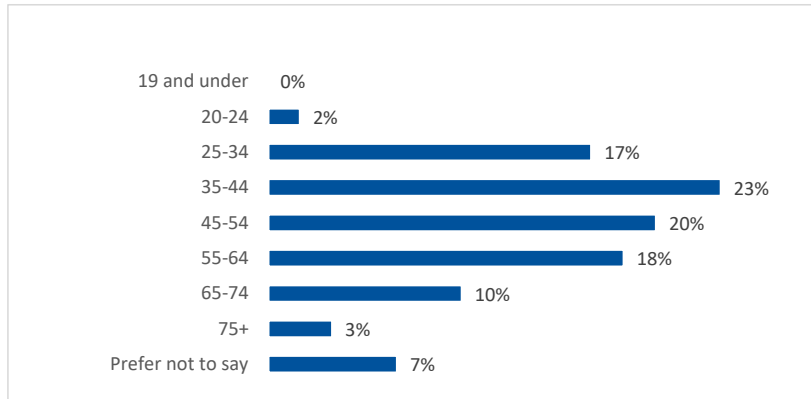
Question 7



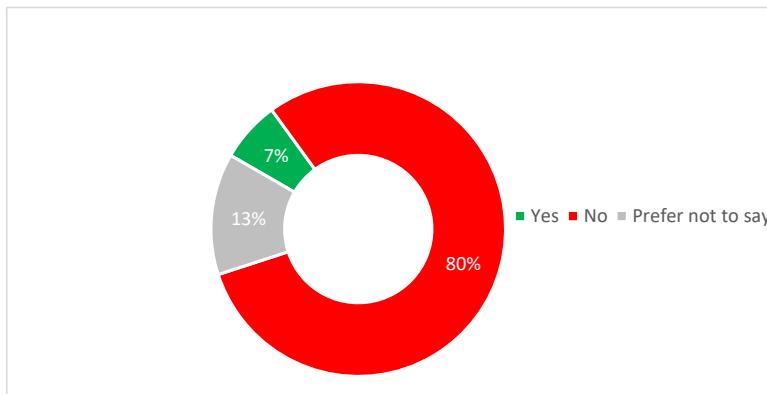
Are you:		
Response	Number of respondents	Percentage of all respondents
TOTAL NUMBER OF RESPONDENTS ANSWERING THIS QUESTION		
Male	11	18%
Female	46	77%
Prefer not to say	3	5%
Prefer to self describe	0	0%



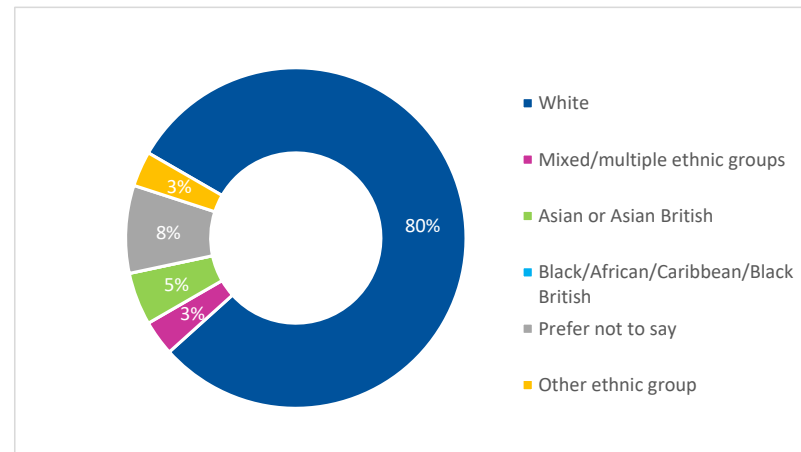
Question 8		
What was your age last birthday?		
Response	Number of respondents	Percentage of all respondents
TOTAL NUMBER OF RESPONDENTS ANSWERING THIS QUESTION		
19 and under	0	0%
20-24	1	2%
25-34	10	17%
35-44	14	23%
45-54	12	20%
55-64	11	18%
65-74	6	10%
75+	2	3%
Prefer not to say	4	7%



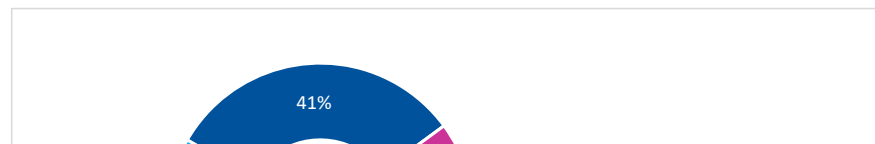
Question 9		
Do you consider yourself to have a disability?		
Response	Number of respondents	Percentage of all respondents
TOTAL NUMBER OF RESPONDENTS ANSWERING THIS QUESTION		
Yes	4	7%
No	48	80%
Prefer not to say	8	13%



Question 10		
How would you describe your ethnic group?		
Response	Number of respondents	Percentage of all respondents
TOTAL NUMBER OF RESPONDENTS ANSWERING THIS QUESTION		
White	48	80%
Mixed/multiple ethnic groups	2	3%
Asian or Asian British	3	5%
Black/African/Caribbean/Black British	0	0%
Prefer not to say	5	8%
Other ethnic group	2	3%



Question 11
 If you have children aged 16 or under please tell us their ages:
NB Respondents were able to select more than one option, so percentages add up to more than 100.



Response	Number of respondents	Percentage of all respondents
TOTAL NUMBER OF RESPONDENTS ANSWERING THIS QUESTION	29	
0-4	12	41%
5-10	8	28%
11-13	10	34%
14-16	8	28%

